

# USR5502

## Mini Bluetooth Keyboard

### User Guide



#### Package Contents

- USRobotics Mini Bluetooth Keyboard
- Reference CD with User Guide
- Micro USB 2.0 Cable

#### Features

- Bluetooth Version: Bluetooth V2.0 HID
- 49 key mini QWERTY keyboard
- Built-in rechargeable Li-ion battery via Micro USB 2.0
- Conserve power with built-in intelligent power management
- Color LED status indication
- Working range: 32 ft
- Charging time: 3-4 hours

## ► Table of contents

- Introduction
- System Requirements
- Installation
  - Charging the keyboard
  - Keyboard Character Map
  - iPad/iPhone
  - Windows Mobile
  - Nokia Symbian
  - Windows
  - Macintosh
  - Linux
  - Playstation 3
- FAQs
- Product Warranty & Support
- Regulatory

## Introduction

Thank you for purchasing the USRobotics Mini Bluetooth Keyboard, the perfect accessory for tablets and other handheld devices.

## System requirements

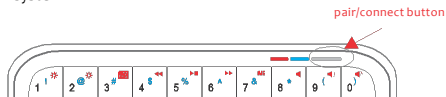
- Built-in Bluetooth functionality on any of the following systems:
  - Apple iPad 1& 2, iPhone/Touch with iOS 4 & later
  - Android tablets (Xoom, Galaxy Tab)
  - Windows Mobile OS 6.0 & later
  - Nokia Symbian S60 OS V3.0 & later
  - Computers with Windows, Mac, or Linux OS
  - Sony Playstation 3
  - HTPC
- USB Port for charging

# Installation

**NOTE:** The first time the keyboard is used you will need to fully charge the battery.

## Step 1 – Prepare the keyboard

- Turn the keyboard to the **ON** position, the blue led will light up for 2 seconds.
- Press the pair (connect) button; the blue LED will flash when in pairing mode.
- The keyboard is now ready to connect with a Bluetooth ready system.



## Step 2 – Connect to a Bluetooth ready system

- On the Bluetooth ready system turn Bluetooth **ON**
- The device should detect the keyboard and provide a way to pair the device. This will include a code or pin that will need to be typed onto the keyboard to finish the pairing process.

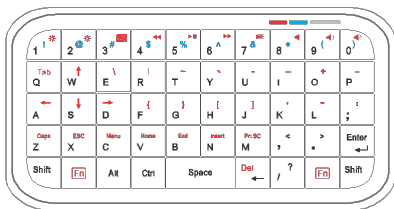
**Detailed installation instructions immediately follow the Keyboard Matrix.**

**Note:** If no signal is received after 10 minutes or the connected device is turned off, the keyboard will revert to Standby Mode. To reactivate the keyboard, click the **Enter** key on the keyboard.

## Charging the keyboard:

1. When the power is low, the blue LED will light up for 1 second and will blink intermittently.
2. To charge connect the keyboard to a powered USB port with the provided micro USB Cable.
3. When charging, the Red LED will light up; then will turn off when charge is completed.

# Keyboard Character Map



## Red Keys (Fn)

- To activate function keys. Press and hold the **Fn** key while pressing the additional key. Example: **Fn + O = +**
- To lock/unlock the Fn keys, press **Fn + Enter**.

## Blue Keys (Shift)

- Press and hold the shift key while pressing the additional key. Example: **Shift + 1 = !**

## Multimedia/Computer Control Function Keys

Key	+ Shift		+ Fn
1	!	*	Brightness down (Mac)
2	@	*	Brightness up (Mac)
3	#	☐	Show Spaces (Mac)
4	\$	◀◀	Rewind (iDevice & PCs)
5	%	▶▶	Play/Pause (iDevice & PCs)
6	^	▶▶	Forward (iDevice & PCs)
7	&	IME	Change Input Language (Mac & iDevices)
8	*	◀	Mute Volume (iDevice & PCs)
9	(	◀	Volume Increase (iDevice & PCs)
0	)	◀	Volume Decrease (iDevice & PCs)
W/A/S/D			Navigation Keys (↑←↓→)
Alt			Home (Windows Mobile only)

Nokia S60 Only Combination Keys		Windows Only Keys	
Fn + Alt	Left Key	Fn + Z	Caps
Fn + Ctrl	Right Key	Fn + X	Esc
Fn + Shift (Left)	Call Key	Fn + C	Menu
Fn + Shift (Right)	End Key	Fn + V/B	Home/End
Fn + Space	Menu	Fn + N	Insert
Ctrl + Enter	OK	Fn + M	Print Screen

# Connect with iPad/iPhone

1. Prepare the keyboard for pairing by turning it on and pressing the pair button.
2. On your iPad/iPhone, go to **Settings** then select **General**.



3. Turn **Bluetooth ON**, it will start searching for Bluetooth devices.
4. When the system finds the keyboard, select **Bluetooth Keyboard**.



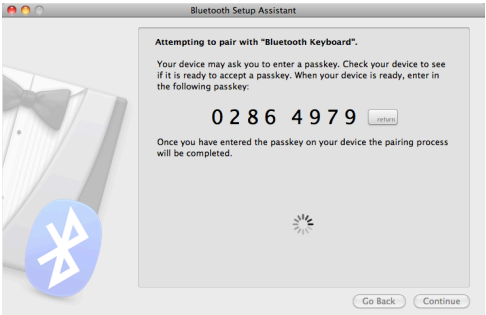
5. A random Bluetooth passkey or pin will be provided by your system. Type this number onto the keyboard, and press **Enter** to complete the pairing.



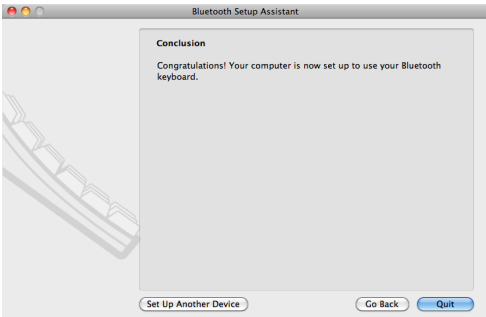
6. Now the keyboard is successfully connected with your iDevice.



4. A random Bluetooth passkey will be provided by your system. Type the Bluetooth passkey onto the keyboard, and press **Enter** to complete the pairing.



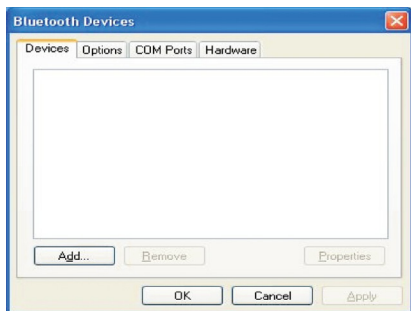
5. Click **Quit**. Now your wireless Bluetooth keyboard is successfully connected with your computer.



## Connect with Windows

**NOTE:** Before you connect the Bluetooth Keyboard, please make sure you have Bluetooth functionality on your system. Additional software & adapters are available, installation instructions may vary.

1. Prepare the keyboard for pairing by turning it on and pressing the pair button.
2. Make sure that the Bluetooth Function has been activated on your computer. Double click the Bluetooth Icon in the Task Bar or in the Control Panel. Click **Add**.

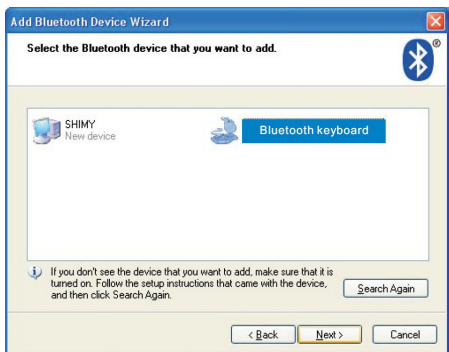


3. Select **My device is set up and ready to be found** and click **Next**.

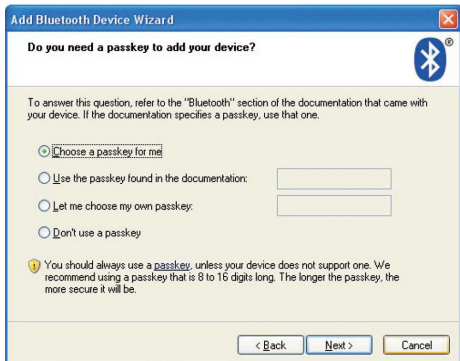




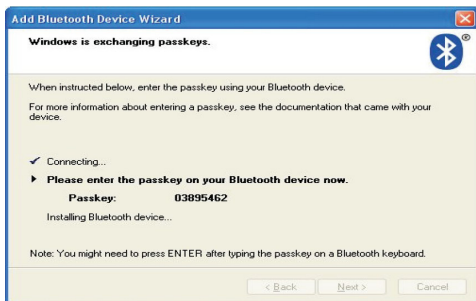
4. When the system finds the keyboard, select **Bluetooth Keyboard** and click **Next**.



5. Select **Choose a pass key for me**, click **Next**.



6. Type the Bluetooth security code onto the keyboard, and press **Enter** to complete the pairing.



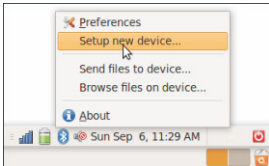
7. Click **Finish**. Now your wireless Bluetooth keyboard is successfully connected with your computer.



# Connect with Linux

**NOTE:** Before you connect the Bluetooth Keyboard, please make sure you have Bluetooth functionality on your system. There are several Linux distributions available. This guide was designed for Ubuntu Linux, but can be easily adapted for other versions. Your computer must be equipped with a Bluetooth module (built in, or USB Dongle).

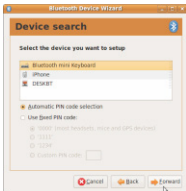
1. Prepare the keyboard for pairing by turning it on and pressing the pair button.
2. Make sure that the Bluetooth Function has been activated on your computer. Click the Bluetooth Icon in the taskbar and select **Set up new device**.



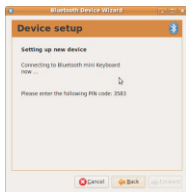
3. After the setup wizard launches, click **Forward**.



4. When the system finds the keyboard, select **Bluetooth Keyboard** and click **Forward**.



5. A random Bluetooth pin will be provided by your system. Type the Bluetooth pin onto the keyboard, and press **Enter** to complete the pairing.



6. Click **Close**. Now your wireless Bluetooth keyboard is successfully connected with your computer.

## Connect with Android

**NOTE:** Before you connect the Bluetooth Keyboard, please make sure you have Bluetooth functionality on your system.

1. Prepare the keyboard for pairing by turning it on and pressing the pair button.
2. On your tablet, go to **Settings** then select **Wireless and Network**, then **Bluetooth Settings**.
3. Turn **Bluetooth ON** and select **Scan Devices**, it will start searching for Bluetooth devices.
4. When the system finds the keyboard, select **Bluetooth Keyboard**.
5. A random Bluetooth passkey or pin will be provided by your system. Type this number onto the keyboard, and press **Enter** to complete the pairing.
6. Now the keyboard is successfully connected with the Android Tablet.

## Connect with PlayStation 3

1. Prepare the keyboard for pairing by turning it on and pressing the pair button.
2. Select **Settings**, then **Accessory Settings**.
3. Select **Manage Bluetooth Devices**, then select **Register New Device**, select **Yes** to continue.
4. Select **Start Scanning**, when the system finds the keyboard select the **Bluetooth Keyboard**.
5. A random Bluetooth passkey will be provided by the system. Type the Bluetooth passkey onto the keyboard, and press **Enter** to complete the pairing.
6. Now your wireless Bluetooth keyboard is successfully connected with your PS3.

## Connect with Microsoft Windows Mobile OS

**NOTE:** Instructions below are for mobiles running WM6.0 and earlier OS. For WM6.1 and later OS mobiles, use the mobile built-in Bluetooth to connect this Mini Bluetooth Keyboard directly.

### On your computer:

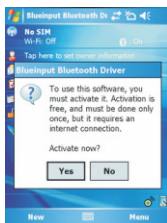
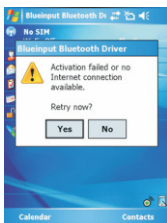
1. Insert the reference CD and open the CD from “My computer”.
2. Locate the “Windows Mobile” folder and the inside “windowmobile.cab” CAB file.
3. Copy the CAB file to your mobile device.

### On your Windows Mobile device:

1. Locate the CAB file copied.
2. Run the windowmobile.cab file to start installation.

The Mini Bluetooth keyboard Driver will install on your device automatically. At the end of the installation, the setup will require a reset.

The first time you run the Bluetooth Keyboard Driver on your Windows Mobile device, you'll see a prompt to activate the software:



If you press NO or if the Internet is not available, Activation will fail and you won't be able to use this software.

Make sure your Windows Mobile device is connected to the Internet, press YES. You only need to do this once after the installation.

## Configuration and Troubleshooting

After the software is successfully installed on your device, you need to pair the Bluetooth Mini Keyboard.

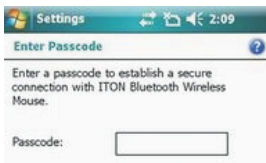
1. Prepare the keyboard for pairing by turning it on and pressing the pair button.
2. Open the Bluetooth on your device, and click **Add new device**



3. Select the Bluetooth Mini Keyboard, and tap **Next**.



4. When prompted for passkey, leave the passcode field blank and tap **Next** (if this fails, enter 0000 as a passcode and press **Next**).



5. Select the "Input device" service and tap **Finish**.



6. Go to the Software settings Panel, and tap **Connect**.

## Troubleshooting

Here are some solutions for the error messages that might appear while using:

- **"The software is not responding. You need to reinstall this software."**

This error is caused by a problem with the communication between the software components. You need to check if your Windows Mobile Device is compatible with the software, and

try to reinstall the software.

- **"Bluetooth is turned off. To use the software, please enable your Bluetooth module!"**

Make sure you are using the software on a smart phone with Windows Mobile (5.0 or 6.0) and the Microsoft Bluetooth Stack. Then enable Bluetooth before using the software.

- **"No active Input Device found. You need to pair a device, using the Bluetooth control panel."**

Make sure your Mini Bluetooth Keyboard is correctly paired to your smart phone. If this error appears while your keyboard is paired, redo the pairing.

## Settings Panel

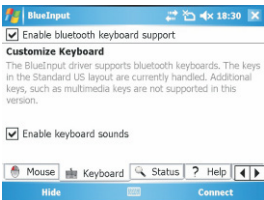
To open the settings panel, go to Start->Settings->System TAB, and tap the icon named "Bluetooth Input Driver"



The settings panel displays several pages, for better access to the software options:

## Keyboard Page

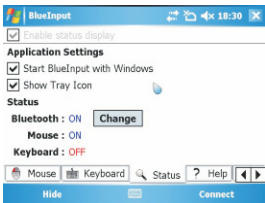
This page offers two options: enable / disable the keyboard functionality and enable / disable keyboard sounds.





## Status Page

Here you can view the status and configure the driver to start when Windows Mobile starts (autostart) and you can enable / disable the tray icon. The tray icon allows quick access to the Settings panel.



The screenshot shows the BlueInput application window. At the top, there is a title bar with the application name 'BlueInput', a maximize button, a refresh button, a volume icon, and the time '18:30'. Below the title bar, there is a checkbox labeled 'Enable status display' which is checked. Underneath, the 'Application Settings' section contains two checked checkboxes: 'Start BlueInput with Windows' and 'Show Tray Icon'. The 'Status' section shows 'Bluetooth : ON' with a 'Change' button, 'Mouse : ON', and 'Keyboard : OFF'. At the bottom, there is a navigation bar with buttons for 'Mouse', 'Keyboard', 'Status', and 'Help', along with left and right arrow buttons. A 'Hide' button and a 'Connect' button are also visible at the very bottom of the window.

## About BlueInput

The About BlueInput page displays the software version and other useful information.



The screenshot shows the 'About BlueInput' page within the BlueInput application window. The title bar is identical to the previous screenshot. Below the title bar, the text 'About BlueInput' is displayed. Underneath, it says 'Bluetooth HID Driver for Windows Mobile'. The 'GUI Version : 1.5' and 'Driver Version : 1.5' are listed. Below this, there are links for 'WEB : [www.teksoftco.com](http://www.teksoftco.com)', 'Order : Teksoft Online Shop', and 'Help : Teksoft Support'. At the bottom, there is a navigation bar with buttons for 'Keyboard', 'Status', 'Help', and 'About', along with left and right arrow buttons. A 'Hide' button and a 'Connect' button are also visible at the very bottom of the window.

# Connect with Nokia Symbian

## On your computer:

1. Insert Driver CD and open the CD from **My computer**
2. Open “Nokia Wireless Keyboard Application” folder and choose your device model or Operating system version, copy the .sis file to your device.

## On your Symbian device:

1. Find the .sis file (on mobile device or memory card) and press **OK**, follow the hints to finish the installation
2. Run the installed application and search Bluetooth device.



3. After paired and connected, you will have to set the keyboard layout. If the layout is not set correctly, the keyboard might not function as expected.

## FAQS:

If unable to connect the Bluetooth Keyboard to the computer, or the keyboard is unresponsive, please try the steps below:

1. The keyboard may be in Standby Mode, just click the enter key of the keyboard to reactive it.
2. Make sure that the keyboard is within the effective range-32ft.
3. Make sure that there's no change of the Bluetooth facility. If anything changed, pair the device again.
4. If your Bluetooth facility is connected to other Bluetooth products, confirm that the speed of the Bluetooth facility is enough.
5. Check the batteries. The battery LED should turn blue when turned on, and will turn on again when the batteries are getting low.
6. Completely install all Bluetooth adapters before attempting to pair the keyboard.

## Product Warranty

This product is subject to the U.S. Robotics Corporation Limited Warranty. To view a copy of the Limited Warranty and for information on how to contact USRobotics Technical Support, please see the U.S. Robotics Corporation web site at: [www.usr.com/support/5502](http://www.usr.com/support/5502).

## Regulatory

### FCC Conditions

This equipment has been tested and found to comply with Part 15 Subpart C, of the FCC Rules. Operation is subject to the following two conditions:

1. this device may not cause harmful interface,
2. this device must accept any interference received including interference that may cause undesired operations.

### CE

This equipment is in compliance with the requirements of the following regulations:

EN60950-1:2006+A11:2009

ETSI EN300-328 V1.7.1 (2006-10)

ETSI EN301-489-17 V1.3.2 (2008-04)

ETSI EN301-489-1 V1.8.1 (2008-04)

### WEEE Information

For EU (European Union) member users: According to the WEEE (Waste Electrical and Electronic Equipment) Directive, do not dispose of this product as household waste or commercial waste. Waste electrical and electronic equipment should be appropriately collected and recycled as required by practices established for your country. For information on recycling of this product, please contact your local authorities, your household waste disposal service or the shop where you purchased the product.



Copyright © 2011 U.S. Robotics Corporation. All rights reserved. U.S. Robotics and the USRobotics logo are registered trademarks of U.S. Robotics Corporation. Other product names are for identification purposes only and may be trademarks of their respective companies. Product specifications subject to change without notice.