

U.S. Robotics®

11 Mbps Wireless USB Adapter

Companion Reference Guide



R24.0271.00

11 Mbps Wireless USB Adapter Installation



Note: For the most recent installation information, refer to the product Web site at <http://www.usr.com/support>. You can also refer to the User Guide on the Installation CD-ROM for more detailed information.

Step One: Prepare for Installation

Turn on your desktop or laptop computer. Type your password if you are prompted to do so.

Make sure you have an available USB port on your computer.



Note: It is important that you have your serial number written down before you install the 11 Mbps Wireless USB Adapter. If you ever need to call our Technical Support department, you will need this number to receive assistance.



Note: Be sure to find out what letter your CD-ROM drive uses before you begin installing your new product. You will need to know this to properly install your software.

Step Two: Install your software



Note: You will need to install this software on all of the PCs or laptops you plan to wirelessly network together using wireless USB devices.

Insert your Installation CD-ROM into your CD-ROM drive.



Note: If the Choose Setup Language window appears, select your preferred language and click **OK**.



Note: If your CD-ROM does not automatically launch, click Windows **Start, Run**, and type **D:\setup** (or the appropriate letter of your CD-ROM drive) and click **OK**.

Some files will be copied to your system, and then you will be asked to read the license agreement. Read the agreement and click **Yes**.

The Installation CD Graphic User Interface (GUI) will appear on your screen. Click **Software**.

Click **Install Wireless Adapter Configuration Utility**. Follow the on-screen instructions and wait for some files to be copied to your hard drive.

You will be prompted to select your Wireless Mode. Select **Infrastructure Mode** if you will be using a Wireless Access Point. Select **802.11 Ad-Hoc Mode** if you will be in a peer-to-peer network. After you select your Wireless Mode, click **Next**.

You will be prompted for an SSID. If you do not have an existing wireless network, leave the default setting of **ANY** and click **Next**. If you have an existing wireless network, enter the SSID and click **Next**.

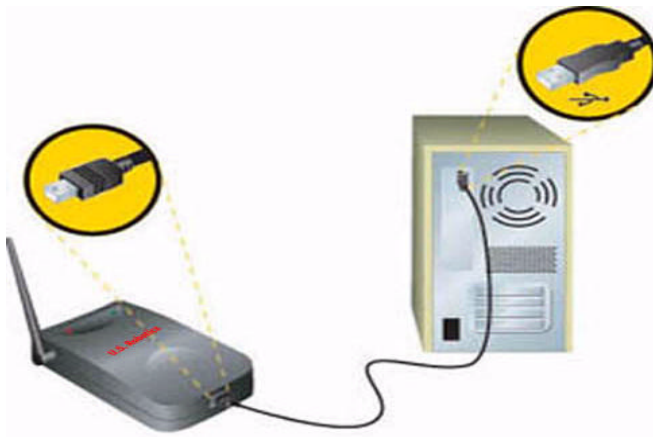
Continue to follow the on-screen instructions to finish the installation procedure. When you are prompted, select **Yes, I want to restart my computer now** and click **Finish**.


Remove the Installation CD-ROM, reboot your computer, and prepare to install your hardware.

Step Three: Connect the 11 Mbps Wireless USB Adapter to your computer.

Plug the small end of the included USB cable into the USB port on the 11 Mbps Wireless USB Adapter.

Locate an available USB port on your computer and insert the large rectangular end of the included USB cable.



 **Note:** Make sure the USB cable is fully inserted into the USB port on your computer and to the USB port on the 11 Mbps Wireless USB Adapter. Your computer will not detect the 11 Mbps Wireless USB Adapter if the USB cable is loose on either end.

When Windows detects the new hardware, click **Next**.* Windows may need to copy some files. Wait for any files to be copied.

After a few moments, all the necessary files will be copied and the installation procedure will be complete. If you are prompted, click **Finish**.

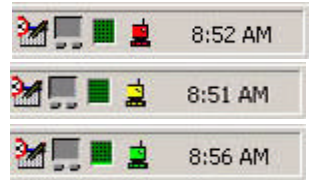


Note: You may be prompted for your Windows Operating System CD-ROM. Insert your Windows Operating System CD-ROM into the CD-ROM drive. When Windows is finished copying files, remove the Windows Operating System CD-ROM.

Congratulations, You have finished installing your hardware and your drivers! Reboot your machine and you will now see a small icon for the Configuration Utility in the system tray by your clock.

The Configuration Utility is used to change or verify the configuration information that relates to your 11 Mbps Wireless USB Adapter.

The Configuration Utility icon will be colored to indicate the status of your wireless network: red for disconnected, yellow for connected with weak quality, and green for connected with good quality.



Note: Each 11 Mbps Wireless USB Adapter you want to connect to the wireless network must be on the same channel. Access the Configuration Utility to verify and, if necessary, change the selected channel.

You must now configure each computer that has a 11 Mbps Wireless USB Adapter in order to share Internet connectivity, files, and a printer. Refer to the "Enabling File and Print Sharing" and the "Enabling Internet Sharing" sections of this guide or refer to the User Guide on the Installation CD-ROM for this information.

The 11 Mbps Wireless USB Adapters are set to **Infrastructure - Access Point** by default. **AdHoc - Peer to Peer** mode is used for peer-to-peer network configurations. **Infrastructure - Access Point** mode is used to add a Wireless Access Point to the wireless network configuration. Each 11 Mbps Wireless USB Adapter in the wireless network must have the correct mode selected within the Configuration Utility.

It is recommended that you take this opportunity to register your 11 Mbps Wireless USB Adapter. Insert the Installation CD-ROM in the CD-ROM drive and follow the on-screen instructions.

For troubleshooting and support information, refer to the Troubleshooting section in this guide, to the User Guide on the U.S. Robotics Installation CD-ROM, or to the U.S. Robotics Website.

Advanced Options

Enabling File and Print Sharing

To enable file and print sharing over the wireless network, perform the following steps on the computers with a 11 Mbps Wireless USB Adapter installed.

Windows 98 and Me Users: Click Windows **Start**, **Settings**, and then **Control Panel**. Double-click **Network** and then click the File and Print Sharing button. Select both boxes in the File and Print Sharing window and then click **OK**. File and print sharing is now enabled.



Note: If your computer is connected directly to the Internet, there is a security risk if you are not using a firewall program or some form of hardware firewall.

Windows 2000 and XP Users: File and print sharing are automatically enabled in Windows 2000 and Windows XP in Administrator mode.

Enabling Internet Sharing

To enable Internet sharing over the wireless network, perform the following steps on each machine that has a 11 Mbps Wireless USB Adapter installed.

Windows 98 Users: Click Windows **Start**, **Settings**, and then **Control Panel**. Double-click **Add/Remove Programs** and then click the Windows Setup tab. Select **Internet Tools** and then click **Details**. Select **Internet Connection Sharing** and click **OK**. Click **Apply**, and the Internet Connection Sharing Wizard will launch. Click **Next**, select the 11 Mbps Wireless USB Adapter to connect to the Internet, and click **Next**. Click **Next** to create a Client Configuration Disk, insert a blank disk into the 3.5-inch disk drive, and click **OK**. This disk will be used to configure Internet sharing in Windows 98. Click **Finish** to complete the configuration of Internet sharing. You will then need to restart your computer.

Windows 2000 Users: There must be two network adapters or one network adapter and one modem installed in order to use Internet sharing. Click Windows **Start**, **Settings**, and then **Network and Dial-up Connections**. Right-click the LAN connection used to connect to the Internet and click **Properties**. Click the Sharing tab. Click the box in this window to enable Internet sharing and click **Apply**. Right-click the LAN connection in the list and click **Properties**. Select **Internet Protocol** and click **Properties**. Click the DNS tab, write down the DNS address that is listed, and return to the Networking and Dial-up Connections window. Right-click the wireless adapter in the list and click **Properties**. Select **Internet Protocol** and click **Properties**. Click the DNS tab and enter the same DNS address as the one listed under the LAN connection.

Windows Me Users: Click Windows **Start**, **Settings**, and then **Control Panel**. Double-click **Add/Remove Programs** and then click the Windows Setup tab. Select **Communications** and then click **Details**. Select **Internet Connection Sharing** and click **OK**. Click **Apply** and the Home Networking Wizard will launch. Click **Next** and then select **Yes this computer uses the following**. Select the direct connection to the Internet from the drop-down menu and click **Next**. When prompted, create a Home Networking Setup disk to be used for the configuration of Internet sharing in Windows 98, and Me. After you have created the disk, click **Next**. Click **Finish** to complete the configuration of Home Networking. You will then need to restart your computer.

Troubleshooting

My computer does not recognize the 11 Mbps Wireless USB Adapter.

Possible Solution:

The 11 Mbps Wireless USB Adapter may not be properly connected. Check the connections of the USB cable to the 11 Mbps Wireless USB Adapter and to the USB port on your computer.

I accidentally clicked Cancel during the Installation procedure.

Possible Solution:

Remove and reinsert the U.S. Robotics Installation CD-ROM into your CD-ROM drive. Repeat the installation procedure of the software before you install any hardware.

The Installation procedure did not begin when I inserted the Installation CD-ROM.

Possible Solution:

Some programs may keep the autolaunch feature of the Installation CD-ROM from beginning. Close any open applications and reinsert the Installation CD-ROM.

The 11 Mbps Wireless USB Adapter is not receiving any power.

Possible Solution:

If you have the 11 Mbps Wireless USB Adapter plugged into a peripheral device, such as a USB hub or a keyboard, the 11 Mbps Wireless USB Adapter may not be powered. Plug the 11 Mbps Wireless USB Adapter directly into a USB port on your computer.

The 11 Mbps Wireless USB Adapter does not work properly and I may need to uninstall the device.

Possible Solution:

Check and be certain the 11 Mbps Wireless USB Adapter is not in use before removing it. The computer will lock up if the 11 Mbps Wireless USB Adapter is in use and is removed. If the 11 Mbps Wireless USB Adapter is not functioning correctly, perform the following steps:

- Click Windows **Start**, **Settings**, and **Control Panel**. Double-click **System** and uninstall the 11 Mbps Wireless USB Adapter or click Windows **Start**, **Programs**, **11 Mbps Wireless USB Adapter**, and then **Uninstaller**.
- Reinstall the 11 Mbps Wireless USB Adapter and reinstall the correct drivers.

The 11 Mbps Wireless USB Adapter cannot communicate with other computers linked via Ethernet in the Infrastructure configuration.

Possible Solution:

- Ensure that each computer in the wireless network is powered on.
- Ensure that the stations is configured with the same operating radio channel as the 11 Mbps Wireless USB Adapter. If the IDs are different, change the 11 Mbps Wireless USB Adapter and all the stations within the network to another radio channel.
- Ensure that each 11 Mbps Wireless USB Adapter is configured with the same security options.

- Ensure that the BSS ID for a roaming disabled station is the same as the 11 Mbps Wireless USB Adapter. Alternately confirm that the ESS ID roaming enabled station is the same as the 11 Mbps Wireless USB Adapter.
- Ensure TCP/IP is installed. Ensure you are a part of the same domain or workgroup. Ensure that you are automatically obtaining the IP address or that you have a correct IP address and subnet mask. Restart the computer that has a connectivity issue. Ensure that you have some files available to be shared.
- If you are not using a U.S. Robotics Wireless Access Point, ensure that you can connect to the Access Point and that the preamble mode is set to Long.
- Reset the Wireless USB Adapters to the default settings and try to connect again.

I received a message that my computer shares a name with another computer on the wireless network.

Possible Solution:

Each computer on the wireless network must have a different name. Refer to your computer's documentation to see how to change the name of your computer.

Are You Still Having Problems?

1. Go to the Support section of the U.S. Robotics Web site at www.usr.com.

Many of the most common difficulties users experience have been addressed in the FAQ and Troubleshooting Web pages for your specific product. Your model number is 1120. You may need to know this to obtain information on the U.S. Robotics Web site.

2. Call the U.S. Robotics Technical Support Department

Technical questions about U.S. Robotics products can also be answered by technical support specialists.

Country	Voice	Online	Support Hours
United States	(801) 401-1143	http://www.usr.com/emailsupport	9:00 A.M. - 5:00 P.M., M-F CST
Canada	(801) 401-1143	http://www.usr.com/emailsupport	9:00 A.M. - 5:00 P.M., M-F CST
Argentina	AT&T Direct + (877) 643-2523	lat_modemsupport@usr.com	9:00 A.M. - 5:00 P.M., M-F CST
Brazil	AT&T Direct + (877) 487-6253	brazil_modemsupport@usr.com	9:00 A.M. - 5:00 P.M., M-F CST
México	AT&T Direct + (877) 643-2523	lat_modemsupport@usr.com	9:00 A.M. - 5:00 P.M., M-F CST
Chile	AT&T Direct + (877) 643-2523	lat_modemsupport@usr.com	9:00 A.M. - 5:00 P.M., M-F CST
Colômbia	AT&T Direct + (877) 643-2523	lat_modemsupport@usr.com	9:00 A.M. - 5:00 P.M., M-F CST
Costa Rica	AT&T Direct + (877) 643-2523	lat_modemsupport@usr.com	9:00 A.M. - 5:00 P.M., M-F CST
Peru	AT&T Direct + (877) 643-2523	lat_modemsupport@usr.com	9:00 A.M. - 5:00 P.M., M-F CST
Puerto Rico	AT&T Direct + (877) 643-2523	lat_modemsupport@usr.com	9:00 A.M. - 5:00 P.M., M-F CST
Venezuela	AT&T Direct + (877) 643-2523	lat_modemsupport@usr.com	9:00 A.M. - 5:00 P.M., M-F CST

For current support contact information, go to the following web site: <http://www.usr.com>

Regulatory Approvals

FCC Declaration of Conformity

This device complies with FCC Rules Part 15. Operation is subject to the following two conditions:

This device may not cause harmful interference.

This device must accept any interference received, including interference that may cause undesired operation.

This equipment has been tested and found to comply with the limits for a Class B digital device, pursuant to Part 15 of the FCC Rules. These limits are designed to provide reasonable protection against harmful interference in a residential installation. This equipment generates, uses and can radiate radio frequency energy. If this equipment is not installed and used in accordance with the manufacturer's instructions, it may cause harmful interference to radio communications. However, there is no guarantee that

interference will not occur in a particular installation. If this equipment does cause harmful interference to radio or television reception, which can be determined by turning the equipment off and on, the user is encouraged to try to correct the interference by one or more of the following measures:

- Reorient or relocate the receiving antenna.
- Increase the separation between the equipment and receiver.
- Connect the equipment to an outlet on a circuit different from that to which the receiver is connected.
- Consult the dealer or an experienced radio/TV technician for help.

The use of shielded cables for connection of the monitor to the graphics card is required to assure compliance with FCC regulations. Modifications to this unit not expressly approved by the party responsible for compliance could void the user's authority to operate this equipment.

FCC Radiation Exposure Statement

This equipment complies with FCC radiation exposure limits set forth for an uncontrolled environment. This equipment should be installed and operated with minimum distance 20 cm between the radiator and your body.

UL Listing/CUL Listing or CSA Certified

This information technology equipment is UL-Listed and CUL Listed or CSA-Certified for the uses described in the users guide.

Manufacturer's Disclaimer Statement

The information in this document is subject to change without notice and does not represent a commitment on the part of the vendor. No warranty or representation, either expressed or implied, is made with respect to the quality, accuracy, or fitness for any particular purpose of this document. The manufacturer reserves the right to make changes to the content of this document and/or the products associated with it at any time without obligation to notify any person or organization of such changes. In no event will the manufacturer be liable for direct, indirect, special, incidental, or consequential damages arising out of the use or inability to use this product or documentation, even if advised of the possibility of such damages.

U.S. Robotics Corporation Limited Warranty

HARDWARE: U.S. Robotics warrants to the end user ("Customer") that this hardware product will be free from defects in workmanship and materials, under normal use and service, for the following length of time from the date of purchase from U.S. Robotics or its authorized reseller:

Two (2) years

U.S. Robotics' sole obligation under this express warranty shall be, at U.S. Robotics' option and expense, to repair the defective product or part, deliver to Customer an equivalent product or part to replace the defective item, or if neither of the two foregoing options is reasonably available, U.S. Robotics may, in its sole discretion, refund to Customer the purchase price paid for the defective product. All products that are replaced will become the property of U.S. Robotics. Replacement products may be new or reconditioned. U.S. Robotics warrants any replaced or repaired product or part for ninety (90) days from shipment, or the remainder of the initial warranty period, whichever is longer.

SOFTWARE: U.S. Robotics warrants to Customer that each software program licensed from it will perform in substantial conformance to its program specifications, for a period of ninety (90) days from the date of purchase from U.S. Robotics or its authorized reseller. U.S. Robotics warrants the media containing software against failure during the warranty period. No updates are provided. U.S. Robotics' sole obligation under this express warranty shall be, at U.S. Robotics' option and expense, to refund the purchase price paid by Customer for any defective software product, or to replace any defective media with software which substantially conforms to applicable U.S. Robotics published specifications. Customer assumes responsibility for the selection of the appropriate applications program and associated reference materials. U.S. Robotics makes no warranty or representation that its software products will meet Customer's requirements or work in combination with any hardware or applications software products provided by third parties, that the operation of the software products will be uninterrupted or error free, or that all defects in the software products will be corrected. For any third-party products listed in the U.S. Robotics software product documentation or specifications as being compatible, U.S. Robotics will make reasonable efforts to provide compatibility, except where the non-compatibility is caused by a "bug" or defect in the third party's product or from use of the software product not in accordance with U.S. Robotics's published specifications or User Guide.

THIS U.S. ROBOTICS PRODUCT MAY INCLUDE OR BE BUNDLED WITH THIRD-PARTY SOFTWARE, THE USE OF WHICH IS GOVERNED BY A SEPARATE END-USER LICENSE AGREEMENT. THIS U.S. ROBOTICS WARRANTY DOES NOT APPLY TO SUCH THIRD-PARTY SOFTWARE. FOR THE APPLICABLE WARRANTY, PLEASE REFER TO THE END-USER LICENSE AGREEMENT GOVERNING THE USE OF SUCH SOFTWARE.

OBTAINING WARRANTY SERVICE: Customer must contact a U.S. Robotics Corporate Service Center or an Authorized U.S. Robotics Service Center within the applicable warranty period to obtain warranty service authorization. Dated proof of purchase from U.S. Robotics or its authorized reseller may be required. Products returned to U.S. Robotics' Corporate Service Center must be pre-authorized by U.S. Robotics with a Service Repair Order (SRO) number marked on the outside of the package, and sent prepaid and packaged appropriately for safe shipment, and it is recommended that they be insured or sent by a method that provides for tracking of the package. The repaired or replaced item will be shipped to Customer, at U.S. Robotics' expense, not later than thirty (30) days after U.S. Robotics receives the defective product. Return the product to:

In The United States:

USR-Walnut

528 Spanish Ln.

Walnut, CA 91789

U.S. Robotics shall not be responsible for any software, firmware, information, or memory data of Customer contained in, stored on, or integrated with any products returned to U.S. Robotics for repair, whether under warranty or not.

WARRANTIES EXCLUSIVE: IF A U.S. ROBOTICS PRODUCT DOES NOT OPERATE AS WARRANTED ABOVE, CUSTOMER'S SOLE REMEDY FOR BREACH OF THAT WARRANTY SHALL BE REPAIR, REPLACEMENT, OR REFUND OF THE PURCHASE PRICE PAID, AT U.S. ROBOTICS' OPTION. TO THE FULL EXTENT ALLOWED BY LAW, THE FOREGOING WARRANTIES AND REMEDIES ARE EXCLUSIVE AND ARE IN LIEU OF ALL OTHER WARRANTIES, TERMS, OR CONDITIONS, EXPRESS OR IMPLIED, EITHER IN FACT OR BY OPERATION OF LAW, STATUTORY OR OTHERWISE, INCLUDING WARRANTIES, TERMS, OR CONDITIONS OF MERCHANTABILITY, FITNESS FOR A PARTICULAR PURPOSE, SATISFACTORY QUALITY, CORRESPONDENCE WITH DESCRIPTION, AND NON-INFRINGEMENT, ALL OF WHICH ARE EXPRESSLY DISCLAIMED. U.S. ROBOTICS NEITHER ASSUMES NOR AUTHORIZES ANY OTHER PERSON TO ASSUME FOR IT ANY OTHER LIABILITY IN CONNECTION WITH THE SALE, INSTALLATION, MAINTENANCE OR USE OF ITS PRODUCTS. U.S. ROBOTICS SHALL NOT BE LIABLE UNDER THIS WARRANTY IF ITS TESTING AND EXAMINATION DISCLOSE THAT THE ALLEGED DEFECT OR MALFUNCTION IN THE PRODUCT DOES NOT EXIST OR WAS CAUSED BY CUSTOMER'S OR ANY THIRD PERSON'S MISUSE, NEGLIGENCE, IMPROPER INSTALLATION OR TESTING, UNAUTHORIZED ATTEMPTS TO OPEN, REPAIR OR MODIFY THE PRODUCT, OR ANY OTHER CAUSE BEYOND THE RANGE OF THE INTENDED USE, OR BY ACCIDENT, FIRE, LIGHTNING, OTHER HAZARDS, OR ACTS OF GOD.

LIMITATION OF LIABILITY: TO THE FULL EXTENT ALLOWED BY LAW, U.S. ROBOTICS ALSO EXCLUDES FOR ITSELF AND ITS SUPPLIERS ANY LIABILITY, WHETHER BASED IN CONTRACT OR TORT (INCLUDING NEGLIGENCE), FOR INCIDENTAL, CONSEQUENTIAL, INDIRECT, SPECIAL, OR PUNITIVE DAMAGES OF ANY KIND, OR FOR LOSS OF REVENUE OR PROFITS, LOSS OF BUSINESS, LOSS OF INFORMATION OR DATA, OR OTHER FINANCIAL LOSS ARISING OUT OF OR IN CONNECTION WITH THE SALE, INSTALLATION, MAINTENANCE, USE, PERFORMANCE, FAILURE, OR INTERRUPTION OF ITS PRODUCTS, EVEN IF U.S. ROBOTICS OR ITS AUTHORIZED RESELLER HAS BEEN ADVISED OF THE POSSIBILITY OF SUCH DAMAGES, AND LIMITS ITS LIABILITY TO REPAIR, REPLACEMENT, OR REFUND OF THE PURCHASE PRICE PAID, AT U.S. ROBOTICS' OPTION. THIS DISCLAIMER OF LIABILITY FOR DAMAGES WILL NOT BE AFFECTED IF ANY REMEDY PROVIDED HEREIN SHALL FAIL OF ITS ESSENTIAL PURPOSE.

DISCLAIMER: Some countries, states, or provinces do not allow the exclusion or limitation of implied warranties or the limitation of incidental or consequential damages for certain products supplied to consumers, or the limitation of liability for personal injury, so the above limitations and exclusions may be limited in their application to you. When the implied warranties are not allowed to be excluded in their entirety, they will be limited to the duration of the applicable written warranty. This warranty gives you specific legal rights which may vary depending on local law.

GOVERNING LAW: This Limited Warranty shall be governed by the laws of the State of Illinois, U.S.A. excluding its conflicts of laws principles and excluding the United Nations Convention on Contracts for the International Sale of Goods.

Printed in Taiwan.