

802.11g Wireless Turbo PCI Adapter Quick Installation Guide

Package Contents:

- 802.11g Wireless Turbo PCI Adapter
- Quick Installation Guide
- One (1) detachable antenna
- Installation CD-ROM



Note: For the most updated information, visit: <http://www.usr.com/support>. You can also refer to the User Guide on the U.S. Robotics Installation CD-ROM for more detailed information.

802.11g Wireless Turbo PCI Adapter Installation

Prepare for installation

Note: Your product number is USR5416. It is very important that you have your serial number written down before you install the 802.11g Wireless Turbo PCI Adapter. You can find your serial number on the label of the 802.11g Wireless Turbo PCI Adapter and on the side of the package. If you ever need to contact our Technical Support department, you will need this number to receive assistance.

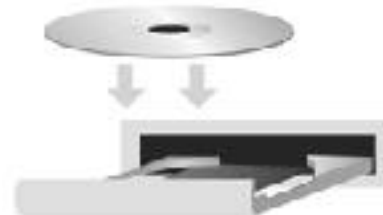
Product Number	Serial Number
USR5416	

Note: Be sure to find out what letter your CD-ROM drive uses before you begin installing your new product. You will need to know this to properly install your software.

Note: During the Installation procedure, you may be prompted for your Windows Operating system CD-ROM. Make sure you have it available in case you need it.

1 Install your software and drivers*

Turn on your computer. Insert the Installation CD-ROM into your CD-ROM drive.



Note: If your CD-ROM does not automatically launch, click Windows Start, Run, type D:\setup (if your CD-ROM drive uses a different letter, type that letter in place of "D"), and click OK.

The Installation CD Graphic User Interface (GUI) will appear on your screen. If prompted, select your preferred language.

Some files will be copied to your system, and then you will be asked to read the license agreement. Read the agreement and click Yes. Select your product and then click Software.

Note: You will need to install this Installation CD-ROM on all the PCs you plan to wirelessly network together.

Click Wireless Card Utility and Drivers. Follow the on-screen instructions. When you are prompted to restart your computer, select No, I will restart my computer later and click Finish. Close the Installation CD-ROM Graphic User Interface (GUI). When your desktop returns, shut down your computer.

2 Install the 802.11g Wireless Turbo PCI Adapter*

Make sure your computer is turned off. Remove the computer's cover. With the computer turned off, locate an available PCI slot and remove the slot cover screw or clip. Remove the slot cover and insert the 802.11g Wireless Turbo PCI Adapter. PCI slots are typically white plastic lined with metal and are 3.5 inches long. Secure the 802.11g Wireless Turbo PCI Adapter with the previously removed screw or clip. Replace the computer's cover and turn on your computer.



Note: It can be tricky getting the 802.11g Wireless Turbo PCI Adapter into the PCI slot. You may need to remove the antenna in order to place the 802.11g Wireless Turbo PCI Adapter into the PCI slot. Use firm pressure to seat the 802.11g Wireless Turbo PCI Adapter properly. If you experience any problems inserting the 802.11g Wireless Turbo PCI Adapter, try inserting it in a different PCI slot.

When Windows detects the new hardware, click Next. Follow the on-screen instructions to complete the installation procedure. If you are prompted, restart your computer.

*A "Digital Signature Not Found" screen may appear. Click Yes or Continue Anyway. U.S. Robotics has thoroughly tested in conjunction with the supported hardware and has verified compatibility with Windows Me/2000/XP.



Note: If you are prompted at any time for your Windows Operating System CD-ROM, remove the U.S. Robotics Installation CD-ROM and insert your Windows CD-ROM into the CD-ROM drive. When all of the files are copied, remove the Windows CD-ROM, and reinsert the U.S. Robotics Installation CD-ROM.

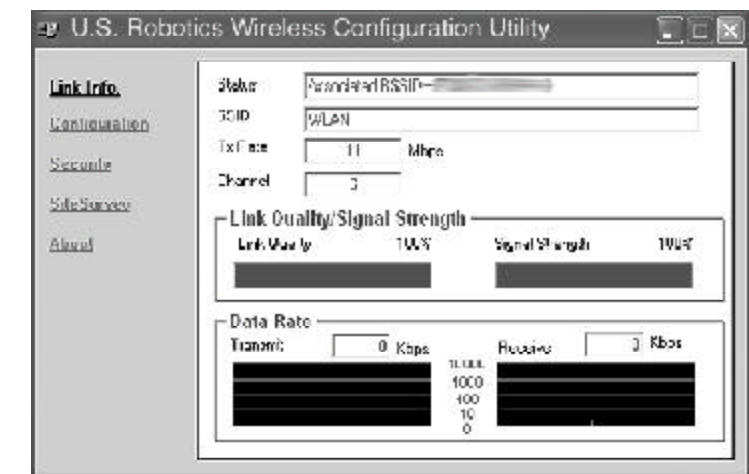
3 Configure the basic connection settings

Congratulations! You have finished installing your hardware and your drivers! The 802.11g Wireless Turbo PCI Adapter will connect to an existing wireless network or other wireless networking products in the area.



You should now see a small icon for the Configuration Utility in the system tray by your clock on your computer desktop. The Configuration Utility is used to change or

verify the configuration information that relates to your 802.11g Wireless Turbo PCI Adapter. The Configuration Utility icon will be colored to indicate the status of your wireless network: red for disconnected or connected with poor quality, yellow for roaming, and green for connected with good quality.



You must now configure each computer that has a 802.11g Wireless Turbo PCI Adapter in order to share Internet connectivity, files, and a printer. Refer to the User Guide on the Installation CD-ROM for this information.

802.11g Adhoc mode is used for peer-to-peer network configurations. Infrastructure mode is used to connect to a Wireless Access Point. Each 802.11g Wireless Turbo PCI Adapter in the wireless network must have the correct mode selected within the Configuration Utility.

For troubleshooting and technical support information, refer to the other side of this Guide or to the User Guide on the U.S. Robotics Installation CD-ROM.



Register your product

- At the Installation CD-ROM interface, click the Support link. Click Registration and Warranty and then click <http://www.usr.com/productreg>. If the Installation CD-ROM interface does not run automatically, click Windows Start and then click Run. In the "Run" dialog box, type D:\setup.exe. If your CD-ROM drive uses a different letter, type that letter in place of "D."
- Or register your product online at <http://www.usr.com/productreg>

Troubleshooting

My computer does not recognise the 802.11g Wireless Turbo PCI Adapter.

Possible Solution:

- The 802.11g Wireless Turbo PCI Adapter may not be fully inserted into the PCI slot. You can also try installing the 802.11g Wireless Turbo PCI Adapter into a different PCI slot.
- Your PCI slot may not be configured correctly. To configure your PCI slot, contact your computer manufacturer.

I am unable to communicate with an Access Point or Wireless Router.

Possible Solution:

Be sure that each 802.11g Wireless Turbo PCI Adapter that you want to connect to the wireless network is set to Infrastructure mode within the Configuration Utility. If your 802.11g Wireless Turbo PCI Adapters are not set to Infrastructure mode, they will not be able to communicate with an Access Point or Wireless Router.

Possible Solution:

Ensure that you are contacting the correct Access Point by verifying the MAC address.

Possible Solution:

Ensure that the correct Authentication Mode and WEP encryption key are being used. If you changed the settings in the configuration of the Access Point, you must also change the settings of every 802.11g Wireless Turbo PCI Adapter attached to this network. The settings of the 802.11g Wireless Turbo PCI Adapters must match the new settings of the Access Point. If you are still experiencing difficulties, reset all of your Wireless Access Points and wireless network adapters to the default settings and try again.

Possible Solution:

Ensure that you can connect to the Wireless Access Point and that the BSSID shows the MAC address of the Access Point you want to communicate with.

Possible Solution:

Ensure that the Wireless Configuration Utility is installed for your 802.11g Wireless Turbo PCI Adapter and that the Wireless Configuration Utility detects your 802.11g Wireless Turbo PCI Adapter.

Possible Solution:

If you are not using a U.S. Robotics Wireless Access Point, ensure that you can connect to the Access Point and that the preamble mode is set correctly. The default setting is Long.

I received a message that my computer shares a name with or there was an IP address conflict with another computer on the wireless network.

Possible Solution:

Each computer on the wireless network must have a unique name and IP address. Refer to your computer's documentation to see how to change the name or the IP address of your computer.

I am unable to establish a wireless connection with my 802.11g Wireless Turbo PCI Adapter.

Possible Solution:

Verify that the 802.11g Wireless Turbo PCI Adapter is properly installed. If you continue to experience problems, uninstall the 802.11g Wireless Turbo PCI Adapter and repeat the installation procedure.

Possible Solution:

If you are attempting a peer-to-peer connection, verify that each wireless adapter is set to 802.11 Adhoc mode. If you are using a Wireless Access Point, verify that each wireless adapter is set to Infrastructure mode.

My 802.11g Wireless Turbo PCI Adapter does not see my Access Point in the list when I scan for it.

Possible Solution:

If you create a wireless connection with the 802.11g Wireless Turbo PCI Adapter but are experiencing poor link quality, check the positioning of the 802.11g Wireless Turbo PCI Adapter. Long distances, multiple floors, or steel or concrete walls can diminish the link quality. If possible, reposition the 802.11g Wireless Turbo PCI Adapter to reduce the effect of any of these obstacles. In addition, check any physical connections between the Access Point and your modem, router, hub, LAN, or switch.

Possible Solution:

If your Access Point is not broadcasting an SSID, it will not appear during a scan by your 802.11g Wireless Turbo PCI Adapter. The client will need to be manually configured.

I accidentally clicked Cancel during the software installation procedure for the 802.11g Wireless Turbo PCI Adapter.

Possible Solution:

Remove and reinsert the Installation CD-ROM into your CD-ROM drive. Repeat Step 1 in the installation procedure.

The software installation procedure did not begin when I inserted the Installation CD-ROM.

Possible Solution:

Some programs may keep the autolaunch feature of the Installation CD-ROM from beginning. Close any open applications and reinsert the Installation CD-ROM. If the Installation CD-ROM interface does not run automatically, click Windows Start and then click Run. In the "Run" dialog box, type D:\setup.exe. If your CD-ROM drive uses a different letter, type that letter in place of "D."

The 802.11g Wireless Turbo PCI Adapter cannot communicate with other computers linked via Wireless in the Infrastructure configuration.

Possible Solution:

- Ensure that each computer in the wireless network is powered on.
- Ensure that each 802.11g Wireless Turbo PCI Adapter is configured on the same operating radio channel. If the IDs are different, change each 802.11g Wireless Turbo PCI Adapter within the LAN to the new radio channel.

- Ensure TCP/IP is installed. Ensure you are a part of the same domain or workgroup. Ensure that you are automatically obtaining the IP address or that you have a correct IP address and subnet mask. Reset the Wireless Access Point and restart the computer that has a connectivity issue.
- Ensure that you have some files available for sharing.

For more troubleshooting information or for advanced wireless configuration options, refer to the User Guide on the Installation CD-ROM or go to www.usr.com/support

Additional Support Information

1. Go to the User Guide on the Installation CD-ROM. More configuration and troubleshooting information is available in the User Guide on the Installation CD-ROM.

2. Go to the Support section of the U.S Robotics Web site at www.usr.com

Many of the most common difficulties users experience have been addressed in the FAQ and Troubleshooting Web pages for your specific product. Your product number is USR5416. You may need to know this to obtain information on the U.S. Robotics Web site.

3. Call the U.S. Robotics Technical Support department.

Technical questions about U.S. Robotics products can also be answered by technical support specialists.

Country	Voice	Online	Support Hours
United States	(801) 401-1143	http://www.usr.com/emailsupport	9:00 A.M. - 5:00 P.M., Monday - Friday CST
Canada	(801) 401-1143	http://www.usr.com/emailsupport	9:00 A.M. - 5:00 P.M., Monday - Friday CST

For current support contact information, go to the following Web site: <http://www.usr.com/support>

Regulatory Approvals

FCC Declaration of Conformity

This device complies with FCC Rules Part 15. Operation is subject to the following two conditions:

This device may not cause harmful interference.

This device must accept any interference received, including interference that may cause undesired operation.

This equipment has been tested and found to comply with the limits for a Class B digital device, pursuant to Part 15 of the FCC Rules. These limits are designed to provide reasonable protection against harmful interference in a residential installation. This equipment generates, uses and can radiate radio frequency energy. If this equipment is not installed and used in accordance with the manufacturer's instructions, it may cause harmful interference to radio communications. However, there is no guarantee that interference will not occur in a particular installation. If this equipment does cause harmful interference to radio or television reception, which can be determined by turning the equipment off and on, the user is encouraged to try to correct the interference by one or more of the following measures:

- Reorient or relocate the receiving antenna.
- Increase the separation between the equipment and receiver.
- Connect the equipment to an outlet on a circuit different from that to which the receiver is connected.
- Consult the dealer or an experienced radio/TV technician for help.

The use of shielded cables for connection of the monitor to the graphics card is required to assure compliance with FCC regulations.

Modifications to this unit not expressly approved by the party responsible for compliance could void the user's authority to operate this equipment.

Detachable Antenna Information

FCC Part 15, Subpart C, Section 15.203 Antenna requirement

USR 5416 users: An intentional radiator shall be designed to ensure that no antenna other than that furnished by the responsible party shall be used with the device. The use of a permanently attached antenna or of an antenna that uses a unique coupling to the intentional radiator shall be considered sufficient to comply with the provisions of this section. The manufacturer may design the unit so that a broken antenna can be replaced by the user, but the use of a standard antenna jack or electrical connector is prohibited.

FCC Radiation Exposure Statement

This equipment complies with FCC radiation exposure limits set forth for an uncontrolled environment. This equipment should be installed and operated with minimum distance 20 cm between the radiator and your body.

UL Listing/CUL Listing

This information technology equipment is UL-Listed and CUL-Listed for the uses described in the User Guide.

Industry Canada Statement

This equipment complies with the Industry Canada Spectrum Management and Telecommunications policy, RSS-210 standard, Low Power License-Exempt Radio Communication Devices.

Operation is subject to the following two conditions:

- This device may cause interference.
- This device must accept any interference, including interference that may cause undesired operation of the device.

U.S. Robotics Corporation Two (2) Year Limited Warranty

- GENERAL TERMS:
- This Limited Warranty is extended only to the original end-user purchaser (CUSTOMER) and is not transferable.
- No agent, reseller, or business partner of U.S. Robotics Corporation (U.S. ROBOTICS) is authorised to modify the terms of this Limited Warranty on behalf of U.S. ROBOTICS.
- This Limited Warranty expressly excludes any product that has not been purchased as new from U.S. ROBOTICS or its authorised reseller.
- This Limited Warranty is only applicable in the country or territory where the product is intended for use (As indicated by the Product Model Number and any local telecommunication approval stickers affixed to the product).
- U.S. ROBOTICS warrants to the CUSTOMER that this product will be free from defects in workmanship and materials, under normal use and service, for TWO (2) YEARS from the date of purchase from U.S. ROBOTICS or its authorised reseller.
- U.S. ROBOTICS sole obligation under this warranty shall be, at U.S. ROBOTICS sole discretion, to repair the defective product or part with new or reconditioned parts; or to exchange the defective product or part with a new or reconditioned product or part that is the same or similar; or if neither of the two foregoing options is reasonably available, U.S. ROBOTICS may, at its sole discretion, provide a refund to the CUSTOMER not to exceed the latest published U.S. ROBOTICS recommended retail purchase price of the product, less any applicable service fees. All products or parts that are exchanged for replacement will become the property of U.S. ROBOTICS.
- U.S. ROBOTICS warrants any replacement product or part for NINETY (90) DAYS from the date the product or part is shipped to Customer.
- U.S. ROBOTICS makes no warranty or representation that this product will meet CUSTOMER requirements or work in combination with any hardware or software products provided by third parties.
- U.S. ROBOTICS makes no warranty or representation that the operation of the software products provided with this product will be uninterrupted or error free, or that all defects in software products will be corrected.
- U.S. ROBOTICS shall not be responsible for any software or other CUSTOMER data or information contained in or stored on this product.
- CUSTOMER OBLIGATIONS
- CUSTOMER assumes full responsibility that this product meets CUSTOMER specifications and requirements.
- CUSTOMER is specifically advised to make a backup copy of all software provided with this product.
- CUSTOMER assumes full responsibility to properly install and configure this product and to ensure proper installation, configuration, operation and compatibility with the operating environment in which this product is to

function.

2.3 CUSTOMER must furnish U.S. ROBOTICS a dated Proof of Purchase (copy of original purchase receipt from U.S. ROBOTICS or its authorised reseller) for any warranty claims to be authorised.

3.0 OBTAINING WARRANTY SERVICE:

3.1 CUSTOMER must contact U.S. ROBOTICS Technical Support or an authorised U.S. ROBOTICS Service Centre within the applicable warranty period to obtain warranty service authorisation.

3.2 Customer must provide Product Model Number, Product Serial Number and dated Proof of Purchase (copy of original purchase receipt from U.S. ROBOTICS or its authorised reseller) to obtain warranty service authorisation.

3.3 For information on how to contact U.S. ROBOTICS Technical Support or an authorised U.S. ROBOTICS Service Centre, please see the U.S ROBOTICS corporate Web site at: www.usr.com

3.4 CUSTOMER should have the following information / items readily available when contacting U.S. ROBOTICS Technical Support:

- Product Model Number
- Product Serial Number
- Dated Proof of Purchase
- CUSTOMER contact name & telephone number
- CUSTOMER Computer Operating System version
- U.S. ROBOTICS Installation CD-ROM
- U.S. ROBOTICS Installation Guide

4.0 WARRANTY REPLACEMENT:

4.1 In the event U.S. ROBOTICS Technical Support or its authorised U.S. ROBOTICS Service Centre determines the product or part has a malfunction or failure attributable directly to faulty workmanship and/or materials; and the product is within the TWO (2) YEAR warranty term; and the CUSTOMER will include a copy of the dated Proof of Purchase (original purchase receipt from U.S. ROBOTICS or its authorised reseller) with the product or part with the returned product or part, then U.S. ROBOTICS will issue CUSTOMER a Return Material Authorisation (RMA) and instructions for the return of the product to the authorized U.S. ROBOTICS Drop Zone.

4.2 Any product or part returned to U.S. ROBOTICS without an RMA issued by U.S. ROBOTICS or its authorised U.S. ROBOTICS Service Centre will be returned.

4.3 CUSTOMER agrees to pay shipping charges to return the product or part to the authorised U.S. ROBOTICS Return Centre; to insure the product or assume the risk of loss or damage which may occur in transit; and to use a shipping container equivalent to the original packaging.

4.4 Responsibility for loss or damage does not transfer to U.S. ROBOTICS until the returned product or part is received as an authorised return at an authorised U.S. ROBOTICS Return Centre.

4.5 Authorised CUSTOMER returns will be unpacked, visually inspected, and matched to the Product Model Number and Product Serial Number for which the RMA was authorised. The enclosed Proof of Purchase will be inspected for date of purchase and place of purchase. U.S. ROBOTICS may deny warranty service if visual inspection of the returned product or part does not match the CUSTOMER supplied information for which the RMA was issued.

4.6 Once a CUSTOMER return has been unpacked, visually inspected, and tested U.S. ROBOTICS will, at its sole discretion, repair or replace, using new or reconditioned product or parts, to whatever extent it deems necessary to restore the product or part to operating condition.

4.7 U.S. ROBOTICS will make reasonable effort to ship repaired or replaced product or part to CUSTOMER, at U.S. ROBOTICS expense, not later than TWENTY ONE (21) DAYS after U.S. ROBOTICS receives the authorized CUSTOMER return at an authorised U.S. ROBOTICS Return Centre.

4.8 U.S. ROBOTICS shall not be liable for any damages caused by delay in delivering or furnishing repaired or replaced product or part.

5.0 LIMITATIONS

5.1 THIRD-PARTY SOFTWARE: This U.S. ROBOTICS product may include or be bundled with third-party software, the use of which is governed by separate end-user license agreements provided by third-party software vendors. This U.S. ROBOTICS Limited Warranty does not apply to such third-party software. For the applicable warranty refer to the end-user license agreement governing the use of such software.

5.2 DAMAGE DUE TO MISUSE, NEGLECT, NON-COMPLIANCE, IMPROPER INSTALLATION, AND/OR ENVIRONMENTAL FACTORS: To the extent permitted by applicable law, this U.S. ROBOTICS Limited Warranty does not apply to normal wear and tear; damage or loss of data due to interoperability with current and/or future versions of operating system or other current and/or future software and hardware; alterations (by persons other than U.S. ROBOTICS or authorized U.S. ROBOTICS Service Centres); damage caused by operator error or non-compliance with instructions as set out in the user documentation or other accompanying documentation; damage caused by acts of nature such as lightning, storms, floods, fires, and earthquakes, etc. Products evidencing the product serial number has been tampered with or removed; misuse, neglect, and improper handling; damage caused by undue physical, temperature, or electrical stress; counterfeit products; damage or loss of data caused by a computer virus, worm, Trojan horse, or memory content corruption; failures of the product which result from accident, abuse, misuse (including but not limited to improper installation, connection to incorrect voltages, and power points); failures caused by products not supplied by U.S. ROBOTICS; damage cause by moisture, corrosive environments, high voltage surges, shipping, abnormal working conditions; or the use of the product outside the borders of the country or territory intended for use (As indicated by the Product Model Number and any local telecommunication approval stickers affixed to the product).

5.3 TO THE FULL EXTENT ALLOWED BY LAW, THE FOREGOING WARRANTIES AND REMEDIES ARE EXCLUSIVE AND ARE IN LIEU OF ALL OTHER WARRANTIES, TERMS, OR CONDITIONS, EXPRESS OR IMPLIED, EITHER IN FACT OR BY OPERATION OF LAW, STATUTORY OR OTHERWISE, INCLUDING WARRANTIES, TERMS, OR CONDITIONS OF MERCHANTABILITY, FITNESS FOR A PARTICULAR PURPOSE, SATISFACTORY QUALITY, CORRESPONDENCE WITH DESCRIPTION, AND NON-INFRINGEMENT, ALL OF WHICH ARE EXPRESSLY DISCLAIMED. U.S. ROBOTICS NEITHER ASSUMES NOR AUTHORISES ANY OTHER PERSON TO ASSUME FOR IT ANY OTHER LIABILITY IN CONNECTION WITH THE SALE, INSTALLATION, MAINTENANCE, WARRANTY, OR USE OF ITS PRODUCTS.

5.4 LIMITATION OF LIABILITY. TO THE FULL EXTENT ALLOWED BY LAW, U.S. ROBOTICS ALSO EXCLUDES FOR ITSELF AND ITS SUPPLIERS ANY LIABILITY, WHETHER BASED IN CONTRACT OR TORT (INCLUDING NEGLIGENCE), FOR INCIDENTAL, CONSEQUENTIAL, INDIRECT, SPECIAL, OR PUNITIVE DAMAGES OF ANY KIND, OR FOR LOSS OF REVENUE OR PROFITS, LOSS OF BUSINESS, LOSS OF INFORMATION OR DATA, OR OTHER FINANCIAL LOSS ARISING OUT OF OR IN CONNECTION WITH THE SALE, INSTALLATION, MAINTENANCE, USE, PERFORMANCE, FAILURE, OR INTERRUPTION OF ITS PRODUCTS, EVEN IF U.S. ROBOTICS OR ITS AUTHORISED RESELLER HAS BEEN ADVISED OF THE POSSIBILITY OF SUCH DAMAGES, AND LIMITS ITS LIABILITY TO REPAIR, REPLACEMENT, OR REFUND OF THE PURCHASE PRICE PAID, AT U.S. ROBOTICS OPTION. THIS DISCLAIMER OF LIABILITY FOR DAMAGES WILL NOT BE AFFECTED IF ANY REMEDY PROVIDED HEREIN SHALL FAIL OF ITS ESSENTIAL PURPOSE.

6.0 DISCLAIMER: Some countries, states, territories or provinces do not allow the exclusion or limitation of implied warranties or the limitation of incidental or consequential damages for certain products supplied to consumers, or the limitation of liability for personal injury, so the above limitations and exclusions may be limited in their application to CUSTOMER. When the implied warranties are not allowed by law to be excluded in their entirety, they will be limited to the TWO (2) YEAR duration of this written warranty. This warranty gives CUSTOMER specific legal rights, which may vary depending on local law.

7.0 GOVERNING LAW: This Limited Warranty shall be governed by the laws of the State of Illinois, U.S.A. excluding its conflicts of laws principles and excluding the United Nations Convention on Contracts for the International Sale of Goods.

U.S. Robotics Corporation

935 National Parkway

Schaumburg, IL 60173

U.S.A