

READ ME FIRST!

56K* Winmodem[™] Installation Guide For Windows[®] 95

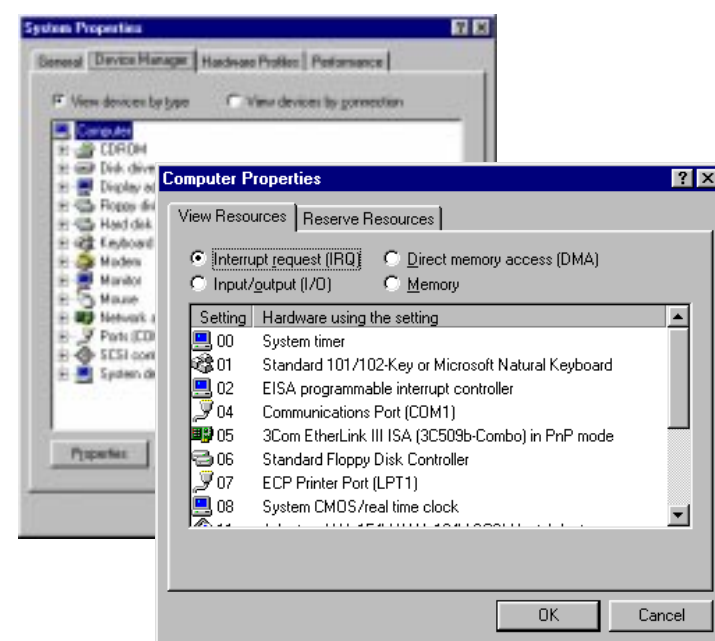
For Windows 3.x installation instructions, refer to the electronic manual on the *Connections*[™] CD-ROM.



part number 1.024.1638-00

1 Check available computer resources.

Hold **Alt** and double-click **My Computer** (located on your desktop). Click the **Device Manager** tab. Double-click **Computer**. At the "Computer Properties" screen, make sure **Interrupt request (IRQ)** is selected at the top of the screen.



IMPORTANT: If any of the following numbers --- 03, 04, 05, 07, 09 -- is missing from the screen's left column, skip to step 2. If IRQs 03, 04, 05, 07 and 09 are all listed, they are all being used by other devices. Your modem needs one of these IRQs in order to function properly. To make either IRQ 03, 04, 05, 07 or 09 available for your modem, assign a different (usually higher) IRQ to one of the devices currently using one of these IRQ settings. (We recommend moving the device using IRQ 03 or 05.) Once you have determined which device you need to move to a higher IRQ, refer to its documentation or contact its manufacturer for more information about changing its IRQ setting.

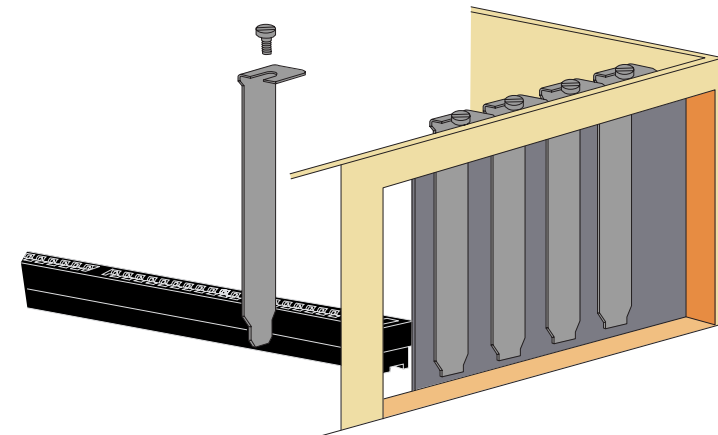
2 Prepare for installation.

Write the modem's serial number in the box below. The serial number is located on the white bar code sticker on the underside of the modem and on the modem's box.

Shut down Windows. Turn off and unplug your computer and all peripherals. Remove the computer's cover.

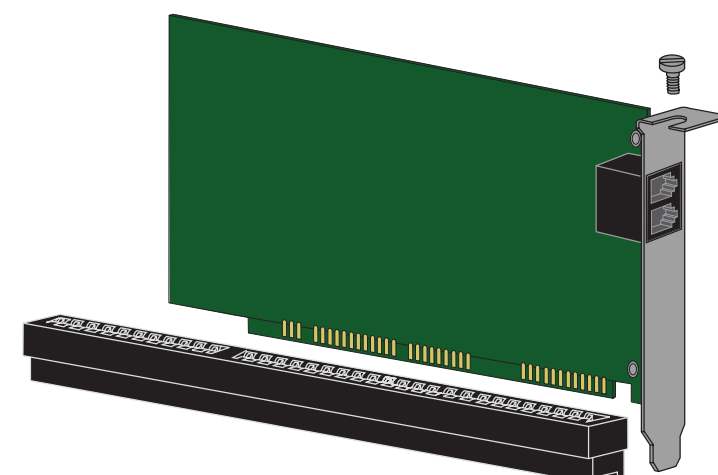
CAUTION: To avoid risk of electrical shock, make sure your computer and all peripheral devices are turned off and unplugged from electrical outlets.

Unscrew and remove the expansion slot cover at the back of an empty ISA expansion slot. The slot cover is located on the back of the computer and covers an opening on the computer case. The opening lines up with the slot (inside the computer) which is usually dark plastic lined with metal.



3 Insert the modem into the empty ISA expansion slot.

Insert the modem, gold edge first, into the slot. The modem should fit snugly into the slot. The modem's metal bracket will cover the opening on the back of the computer. Secure the modem with the screw you removed in step 2. Replace the computer's cover. Reconnect and turn on all peripherals.

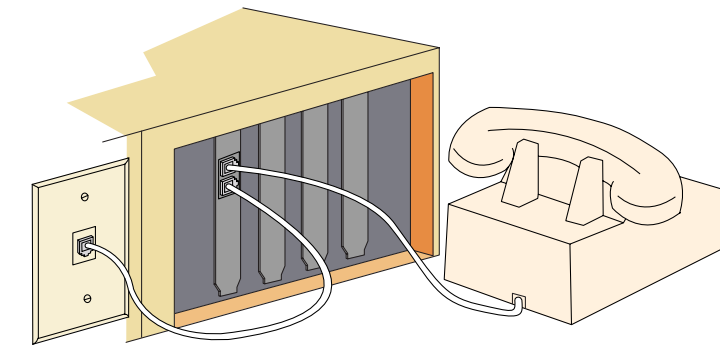


4 Connect the modem to an analog phone line.

Plug one end of the provided phone cord into the TELCO jack on the modem and plug the other end into an analog phone wall jack.

WARNING: Many offices and some homes have digital phone lines. The modem will be damaged if you use a digital phone line. Call your phone company if you are unsure which type of line you have.

When you are not using the modem, you can use a telephone on the modem's phone line. Plug the telephone's cord into the modem's PHONE jack.



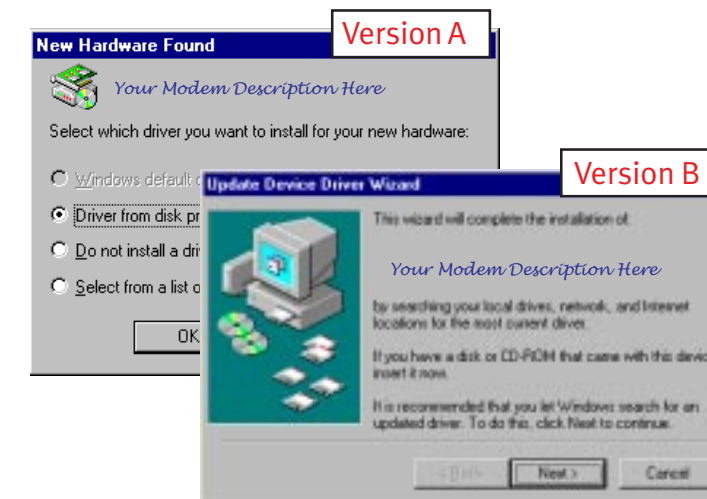
5 Install the modem drivers.

Turn on your computer. When your desktop returns, insert the Winmodem Installation Disk into your computer's floppy disk drive.

Windows 95 **Version A:** When the "New Hardware Found" screen appears, choose **Driver from disk provided by hardware manufacturer** and then click **OK**.

Windows 95 **Version B:** When the "Update Device Driver Wizard" screen appears, click **Next >**.

NOTE: If neither screen appears, refer to the "Plug and Play Does Not Detect Your Modem" section of the *User's Guide & Reference* included in this package.



Version A: Type **A:** in the box and then click **OK**.

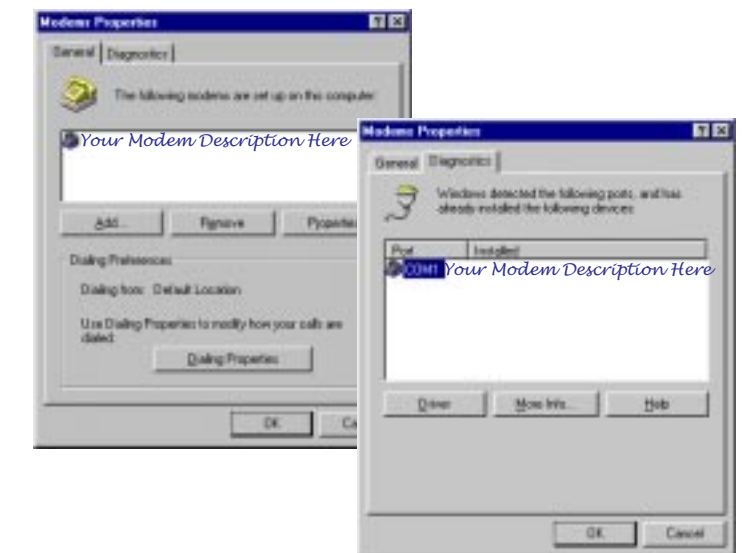
Version B: Click **Finish**. When the "Insert Disk" screen appears, make sure you have the floppy disk inserted into the computer's floppy drive. Click **OK**. When the "Copying Files" screen appears, type **A:** in the box and click **OK**.

NOTE: If your floppy drive uses a different letter, use that letter in place of "A".

6 Verify that the modem is properly installed.

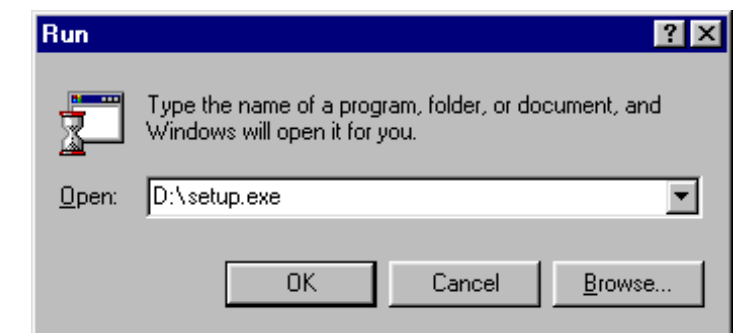
When your desktop returns, verify that your modem is properly installed. Click **Start**, point to **Settings**, and click **Control Panel**. Double-click the **Modems** icon. When the "Modems Properties" screen appears, you should see a description of your modem. Click on the description of your modem and then click the **Diagnostics** tab. Write down the COM port to which your modem is assigned (for example, **COM1**) in the box below. Click **More Info...**. The modem's commands should appear in the box. Click **OK** then click **Cancel**.

COM Port:



7 Install the Connections CD and register your modem.

Click **Start** and then click **Run...**. Type **D:\setup.exe** and then click **OK**. If your CD-ROM drive uses a different letter, type that letter in place of "D".



The Setup Wizard on the CD guides you through installing the *Connections* program group and registering your modem.

For instructions on how to install software from the CD, see the "Software Installation" chapter in the *User's Guide & Reference*.

For troubleshooting help or to find out how to contact technical support, see the "Troubleshooting and Online Help Resources" chapter in the User's Guide & Reference.

IMPORTANT! In accordance with the ITU-T standard for 56K transmissions (V.90), this modem is capable of 56 Kbps downloads. However, due to FCC rules which restrict power output of the service providers' modems, current download speeds are limited to 33 Kbps. Actual speeds may vary depending on line conditions and other factors. Uploads from users to server equipment travel at speeds up to 31.2 Kbps. An analog phone line compatible with the V.90 standard or x2a technology, and an internet provider or corporate host site compatible with the V.90 standard or x2 technology are necessary for these high-speed downloads. See www.3com.com/56K for details.

Copyright ©1998 3Com Corporation or its subsidiaries. All rights reserved. 3Com, the 3Com logo and U. S. Robotics are registered trademarks; x2, Connections and Winmodem are trademarks of 3Com Corporation or its subsidiaries. Windows is a registered trademark of Microsoft Corp. All other trademarks are used for identification purposes only and may be trademarks and/or registered trademarks of their respective companies.