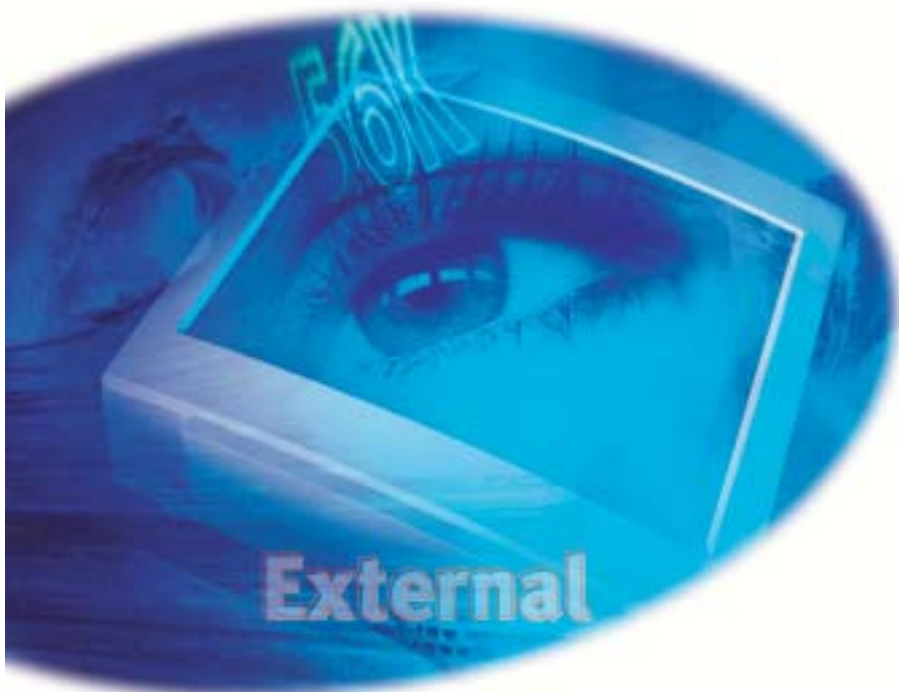


3Com U.S. Robotics®

**READ
ME
FIRST!**

56K Faxmodem Installation Guide For Windows 95

For Windows 3.x installation instructions, refer to the electronic manual on the *Connections™* CD-ROM.



part number 1.024.1503-00

1

Pre

Write the n
The serial
sticker on
modem's l

Shut down

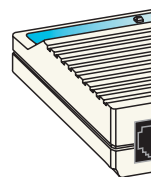
2

Con

Connect o
(included)
computer

NOT

back
232, 1
or PA



Prepare for installation.

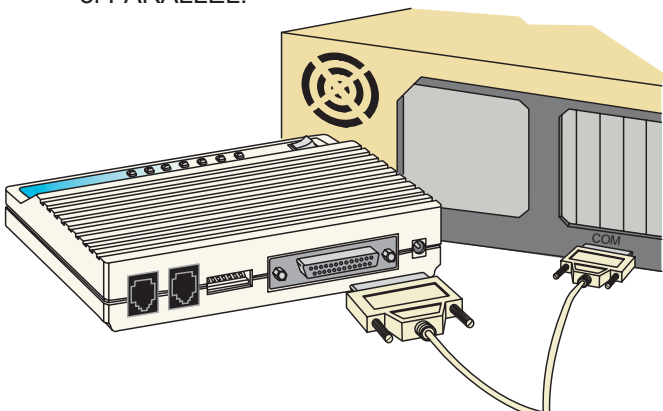
Write the modem's serial number in the box below. The serial number is located on the white bar code sticker on the underside of the modem and on the modem's box.

Shut down Windows and turn off your computer.

Connect the modem to the computer.


Connect one end of the RS-232 serial cable (not included) to the modem and the other to your computer's serial port.

NOTE: When looking for the serial port label on the back of your computer, look for COM, MODEM, RS-232, 10101, or SERIAL. Do not use AUX, GAME, LPT, or PARALLEL.

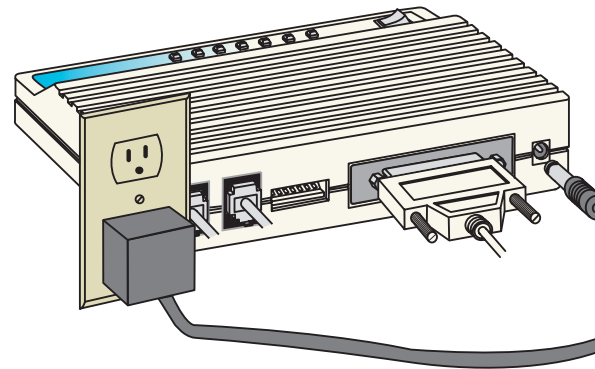


4

Plug in the modem's power supply.

Plug the power supply into the modem's power jack (labeled  on the modem's underside) and into an electrical outlet. Turn on the modem. The power light should illuminate.

NOTE: If the CS light does not illuminate or other lights do not illuminate, make sure that only DIP switches 3, 5, and 6 are in the down position. (The DIP switches are located next to the phone jacks on the back of the modem.) You may also be using the wrong serial cable or the wrong power supply. See the "Before You Begin" section at the beginning of this Installation Guide for more information.



5

Install the modem driver.

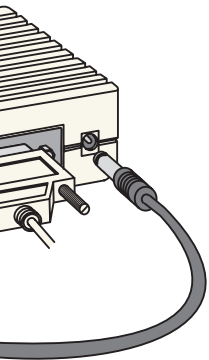
Turn on your computer. When your desktop screen appears, insert the *Connections* CD into your CD-ROM drive.

If you see a "New Hardware Found" screen: Choose **Windows or Version A:** Choose

's power

dem's power jack
derside) and into
modem. The CS

ate or other lights
witches 3, 5, and 8
itches are located
the modem.) You
able or the wrong
gin" section at the
more information.



drivers.

r desktop returns,
r CD-ROM drive.

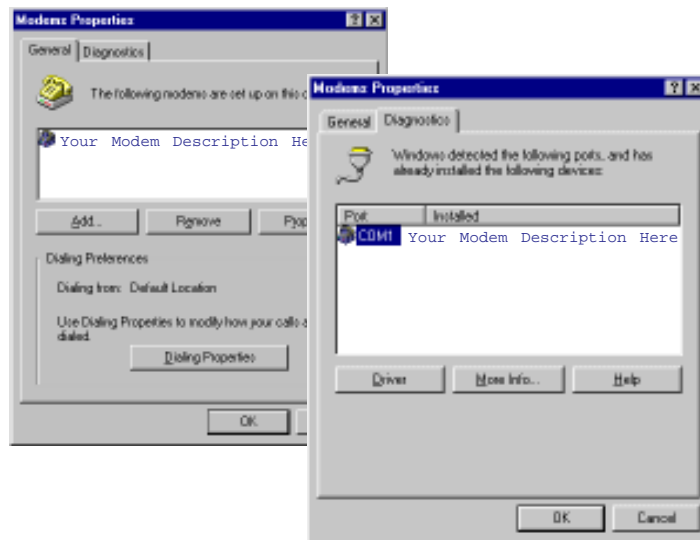
nd" screen, you

6

Verify that the modem is properly installed.

When your desktop returns, verify that your modem is properly installed. Click Start, point to Settings, and click Control Panel. Double-click the **Modems** icon. When the "Modems Properties" screen appears, you should see a description of your modem. Click on the description of your modem and then click the Diagnostics tab. Write down the COM port to which your modem is assigned (for example, COM1) in the box below. Click More Info... The modem's command set should appear in the box. Click OK then click Cancel.

COM Port:



Before You Begin

Use the right cable.

To install the modem, you need an RS-232 serial cable. This is also known as a “modem cable” or a “PC to modem” cable. This cable is not included. **Do not use a null modem cable or a printer cable.** Look at the COM port on the back of your computer to determine the type of cable you need.



You need a DB9/DB25M RS-232 serial cable



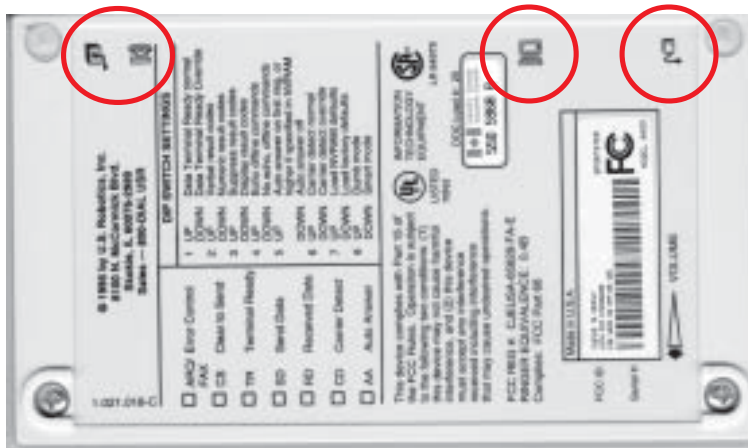
You need a DB25/DB25M RS-232 serial cable

Use the power supply that came with your modem.

While other power adapters may fit into your modem’s power jack, they may damage the modem or cause it to operate irrationally.

Look at the labels.

Note these icons on the modem’s underside:



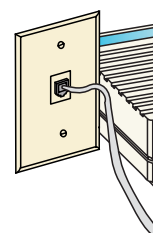
3

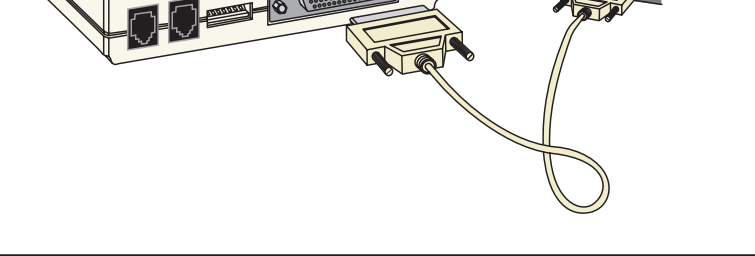
Con

Plug one of the
TELCO jacks into
the modem’s
analog


WAR
phone
digital
unsur

When you
telephone
telephone



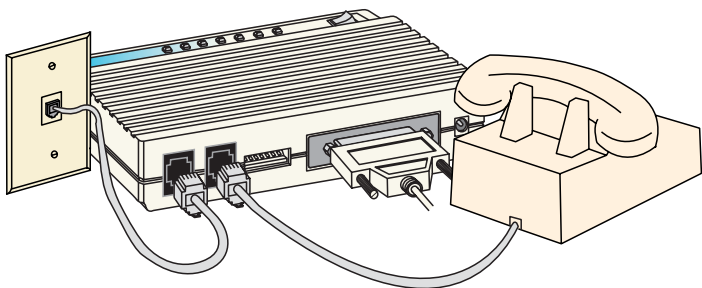


Connect the modem to an analog phone line.

Plug one end of the included phone cord into the TELCO jack on the modem (labeled  on the modem's underside) and plug the other end into an analog phone jack.

WARNING: Many offices and some homes have digital phone lines. The modem will be damaged if you use a digital phone line. Call your phone company if you are unsure which type of line you have.

When you are not using the modem, you can use a telephone on the modem's phone line. Plug the telephone's cord into the modem's PHONE jack.



insert the *Connections* CD into your CD-ROM

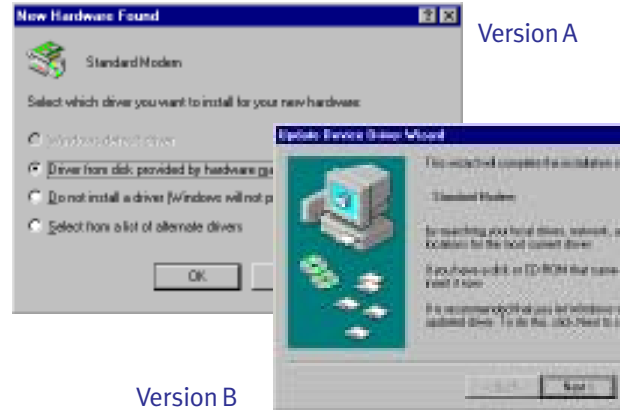
If you see a "New Hardware Found" screen, you have Windows 95 Version A: Choose

 Driver from disk provided by hardware manufacturer, then click .

If you see an "Update Device Driver Wizard" screen, you have Windows 95 Version B:


 Next >.

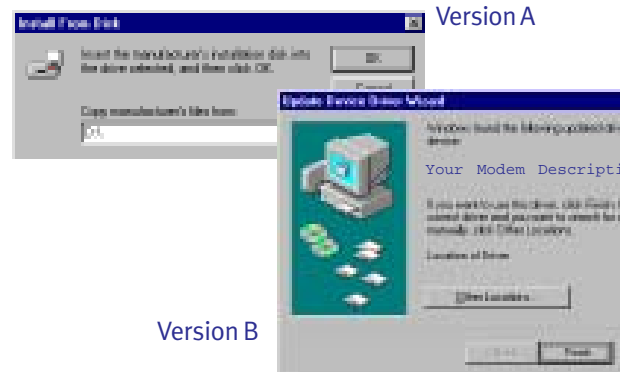
NOTE: If neither screen appears, refer to the "Plug and Play Does Not Detect Your Modem" section of the *User's Guide and Reference* included in this package.



Windows 95 Version A: Type `D:\` in the box, then click .

If your CD-ROM drive is on a different letter, type that letter in place of "D".

Windows 95 Version B: Click .



CD-ROM drive.

nd” screen, you

oose

manufacturer and

Driver Wizard”

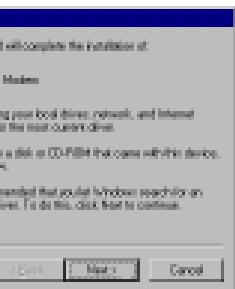
Version B: Click

to the “Plug and

tion of the User’s

ackage.

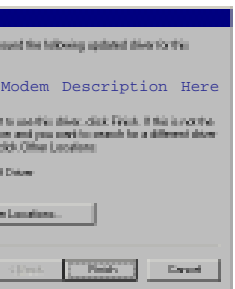
Version A





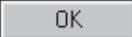
\ in the box and
ROM drive uses a
lace of “D”.

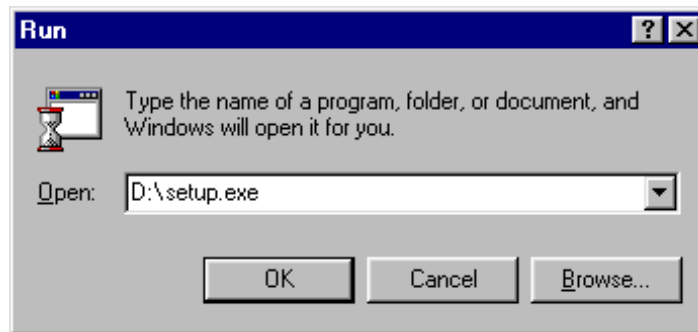
Finish

sion A



7 Install the *Connections* CD and register your modem.

Click  and then click . Type **D:\setup.exe** and then click . If your CD-ROM drive uses a different letter, type that letter in place of “D”.



The Setup Wizard on the CD guides you through installing the *Connections* program group and registering your modem.

For instructions on how to install software from the CD, see the “Software Installation” chapter in the *User’s Guide Reference*.

For troubleshooting help or to find out how to contact technical support, see the “Troubleshooting and Online Help Resources” chapter in the *User’s Guide Reference*.

***IMPORTANT!** In accordance with the ITU-T standard for 56K transmissions, this modem is capable of 56 Kbps downloads. However, due to FCC rules which restrict power output of the service providers’ modems, current download speeds are limited to 53 Kbps. Actual speeds may vary depending on line conditions and other factors. Uploads from users to server equipment travel at speeds up to 31.2 Kbps. An analog phone line compatible with the ITU-T 56K standard or x2 technology, and an Internet provider or corporate host site compatible with the ITU-T 56K standard or x2 technology are necessary for these high-speed downloads.

3Com and U. S. Robotics are registered trademarks; x2 and *Connections* are trademarks of 3Com Corporation or its subsidiaries. Windows is a registered trademark of Microsoft Corp. All other trademarks are used for identification purposes only and may be trademarks and/or registered trademarks of their respective companies. Copyright ©1998 3Com Corporation or its subsidiaries. All rights reserved.

