

# NAS Manager User's manual

SyncQuick™ NAS Manager is a NAS device searching and backup software that has been specifically developed for NAS Client users to provide simple, fast and reliable backup for all personal information including photos, MP3-files, and other important documents.

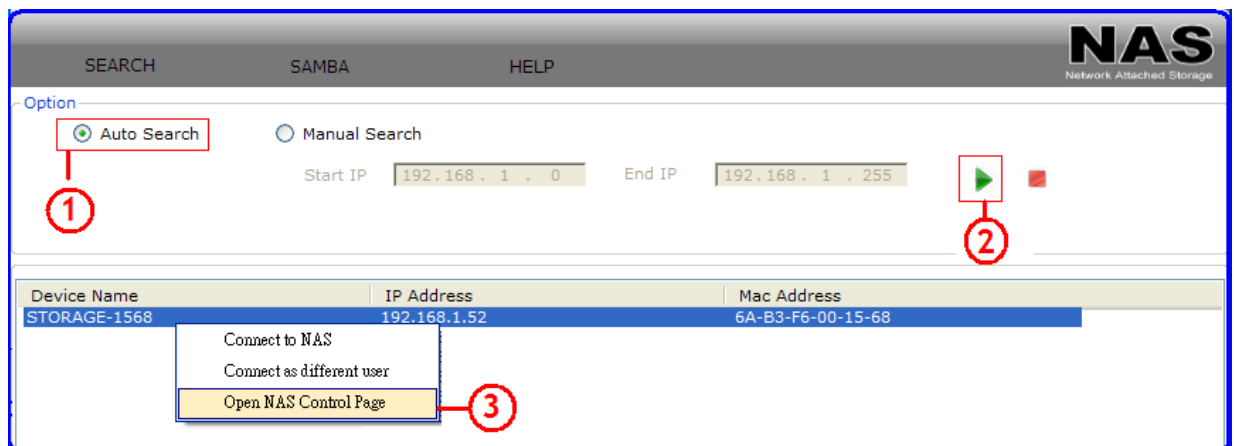
## 1. NAS Search and entering NAS GUI

1. Run the Utility CD enclosed in package, and installed SyncQuick™ NAS manager in to your computer.

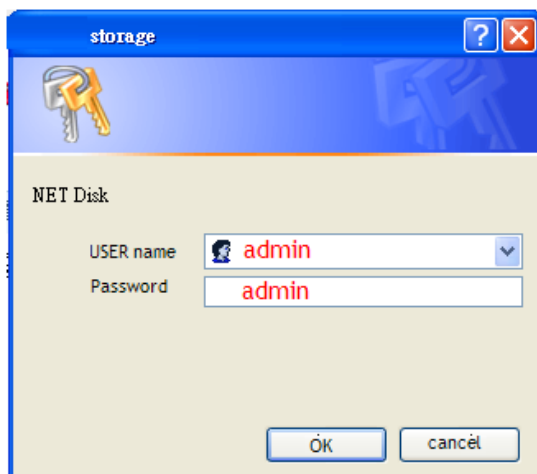


SyncQuick NAS Manager.exe

2. Select Auto Search and when Turbo NAS is found, right click the mouse button and select **“Open NAS Control page”** to start configurations.



3. Default login is **“admin”** for both user name and password, click **“OK”** to enter configurations.



#### 4. Enter to NAS GUI

The screenshot displays the NAS GUI interface. At the top right, the logo "NAS" is prominently shown above the text "Network Attached Storage". On the left side, there is a vertical menu with various system management options: Status, Identification, Time Setting, LAN Config, Disk Utility, Maintenance, Samba Server, WebDAV Server, Media Server, Print Server, and BitTorrent. The main content area is divided into three sections: "Identification" with fields for Host name (STORAGE-0000), Group name (WORKGROUP), and Administrator (admin); "Date and Time" with a Date field showing 2009/10/09 14:18:16 GMT 8:00; and "Disk Usage & Firmware" with fields for Firmware Version (G5S5020314152C0 L:1.20B), Free Size (76449 MB free), and Total Size (78533 MB).

## 2. Entering NAS folder

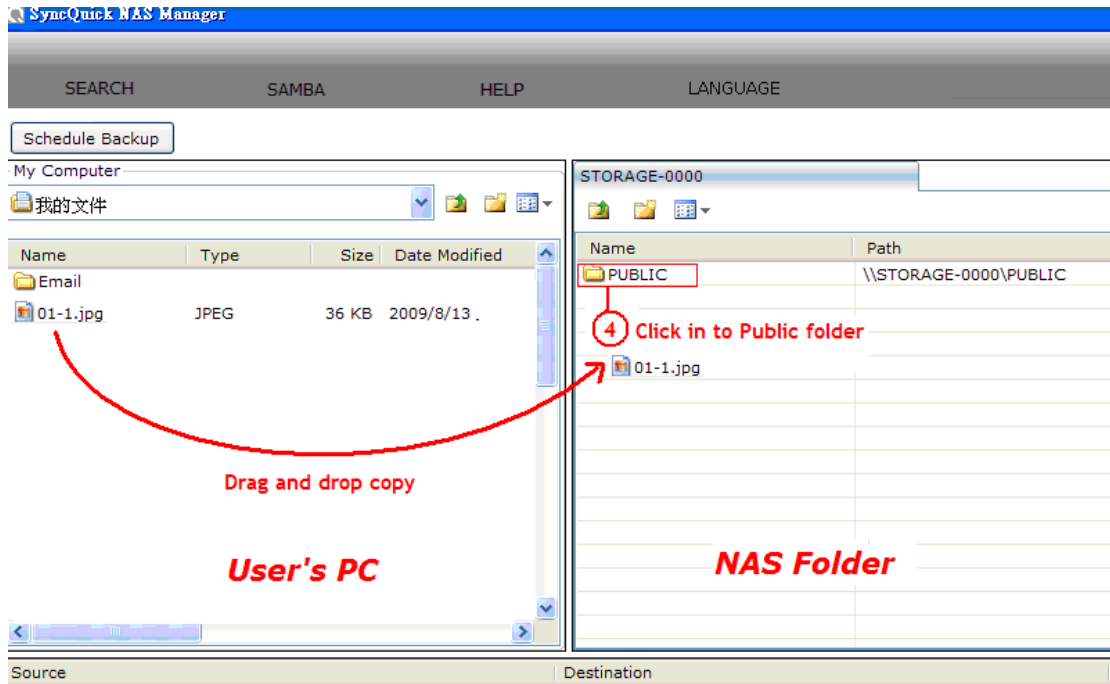
1. Log in to NAS Folder, click right side of mouse button, and select "Connect to NAS".
2. Input NAS folder password.
3. Click "OK" to enter the NAS Folder.

The screenshot shows the SyncQuick NAS Manager application window. At the top, there are menu options: SEARCH, SAMBA, HELP, and LANGUAGE. Below the menu, there are search options: Auto Search and Manual Search (selected). There are input fields for Start IP (192.168.1.0) and End IP (192.168.1.72), along with a green play button and a red stop button. Below this, a table lists discovered devices:

Device Name	IP Address	Mac Address
STORAGE	192.168.1.72	00-B3-F6-00-00-00

A context menu is open over the "STORAGE" device, with the "Connect to NAS" option highlighted. A red circle with the number "1" points to this option. A "Login Details" dialog box is also open, with the "User Name" field containing "guest". A red circle with the number "2" points to the "User Name" field. The "OK" button in the dialog box is highlighted with a red box, and a red circle with the number "3" points to it.

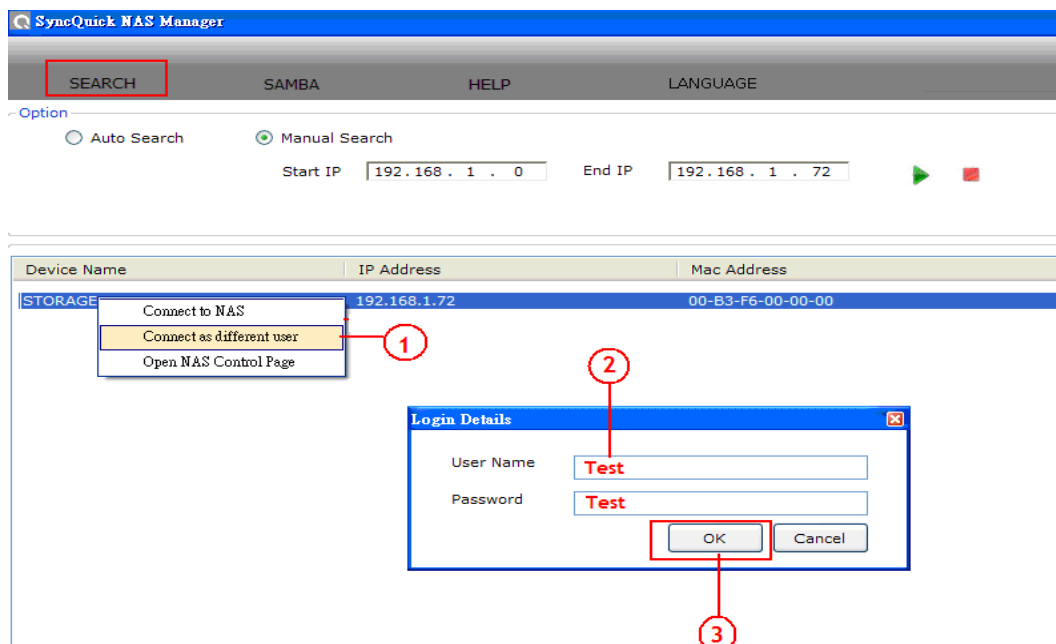
4. A Public folder will be created by NAS by default, click in to the Public folder and user can now copy data between PC and NAS.



5. If you wish to create more folder please go to **NAS Control page/ SMB/Add** folder, Please refer to the NAS user's manual for the setup detail.

### 3. Log in to another user /folder

1. Got to Search page again and right click Log in to NAS Folder, click right side of mouse button, and select **"Connect as different user"**.
2. Enter the user name and Password. ( for example: test is the folder you have created form NAS control page)
3. Click **"OK"** to log in the test folder.



## 4. Scheduling Backup data in to NAS

1. The SAMBA section, click "**Schedule backup**" a back up setting page will pop up on the screen.
2. Select the a data source (Data you want to backup from) and a data destination, (For example: Back up my Tax file from PC to NAS test folder)
3. Select a copy frequency.
4. Enter the NAS folder user name and password. And click "**Save**" to create a back up list. You can create more than one backup job table here.
5. Select the backup job you just created and click "**Start**" to precede it.

